

## Product datasheet for **CS510780**

### Frozen Tissue Sections, Colon

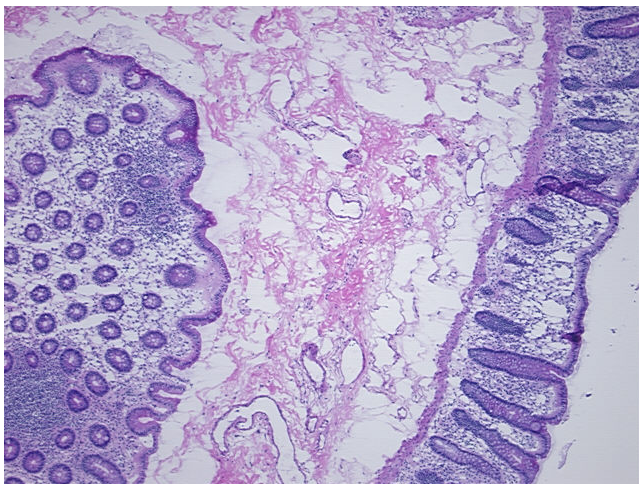
#### Product data:

Product Type:	Frozen Sections
Disease State:	Normal
Diagnosis Category:	Normal
Tissue:	Colon
Frozen Sample ID:	FR0001ADDC
Case ID:	CI0000006630
Tissue of Origin:	Colon
Site of Finding:	Colon
Appearance:	R
Sample Diagnosis (from Pathology Verification):	Within normal limits
Normal:	100%
Lesional:	0%
Tumor:	0%
Tumor Hypo/Acellular Stroma:	0%
Tumor Hypercellular Stroma:	0%
Necrosis:	0%
Pathology Verification notes from H&E review:	40% mucosa, 40% submucosa, 20% muscle
CASE Diagnosis (from medical center path report):	Adenoma of cecum
Age:	83
Gender:	Female
Race:	Not reported

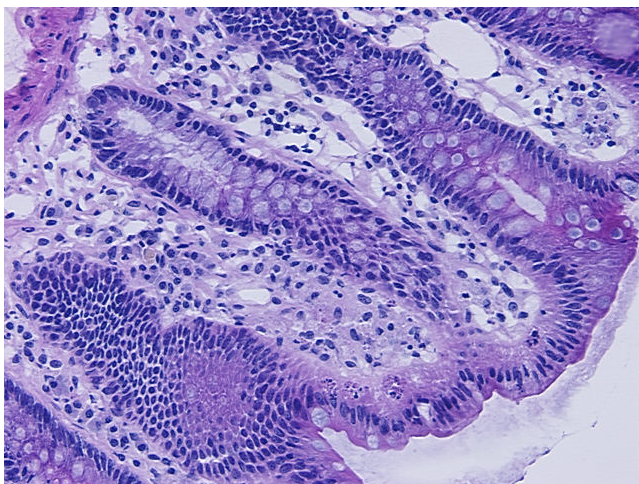


[View online »](#)

Tumor Grade:	Not Reported
Minimum Stage Grouping:	Not Reported
T (Extent of Primary Tumor):	Not Reported
N (Lymph node metastasis):	Not Reported
M (Distant metastasis):	Not Reported
Storage:	Store frozen tissue sections at -80°C.
Stability:	All frozen tissue sections are stable for 1 year from date of purchase if stored at -80°C without repeated freeze/thaws.

**Product images:**

4x Image



20x Image