

## Product datasheet for **CS510584**

### Frozen Tissue Sections, Colon

#### Product data:

Product Type:	Frozen Sections
Disease State:	Normal
Diagnosis Category:	Normal
Tissue:	Colon
Frozen Sample ID:	FR00025565
Case ID:	CI0000006505
Tissue of Origin:	Colon
Site of Finding:	Colon
Appearance:	R
Sample Diagnosis (from Pathology Verification):	Within normal limits
Normal:	100%
Lesional:	0%
Tumor:	0%
Tumor Hypo/Acellular Stroma:	0%
Tumor Hypercellular Stroma:	0%
Necrosis:	0%
Pathology Verification notes from H&E review:	45% mucosa, 20% submucosa, 35% muscle
CASE Diagnosis (from medical center path report):	Crohns disease
Age:	49
Gender:	Female
Race:	White or Caucasian

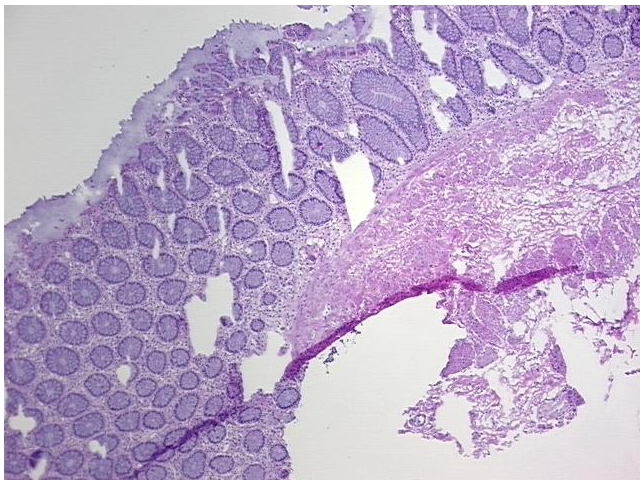


[View online »](#)

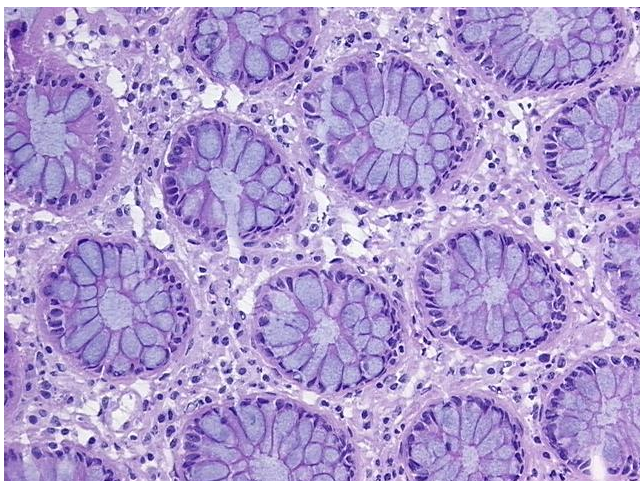
**Storage:** Store frozen tissue sections at -80°C.

**Stability:** All frozen tissue sections are stable for 1 year from date of purchase if stored at -80°C without repeated freeze/thaws.

**Product images:**



4x Image



20x Image