

## Product datasheet for **CS510538**

### Frozen Tissue Sections, Colon

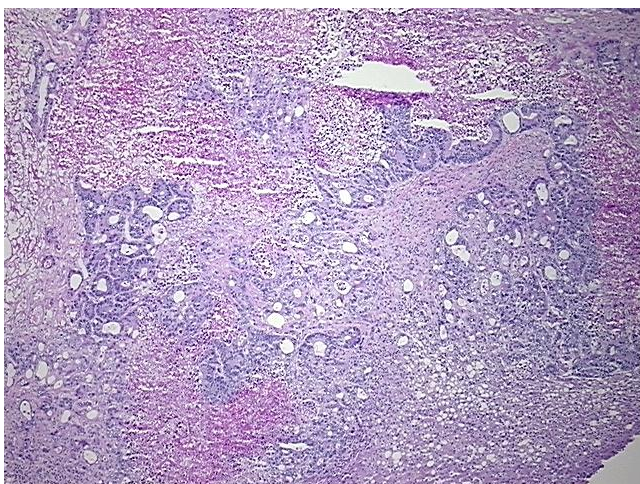
#### Product data:

Product Type:	Frozen Sections
Disease State:	Cancer
Diagnosis Category:	Colorectal Cancer
Tissue:	Colon
Frozen Sample ID:	FR00023AED
Case ID:	CI0000006461
Tissue of Origin:	Colon
Site of Finding:	Liver
Appearance:	T
Sample Diagnosis (from Pathology Verification):	Adenocarcinoma of colon, metastatic
Normal:	20%
Lesional:	0%
Tumor:	40%
Tumor Hypo/Acellular Stroma:	0%
Tumor Hypercellular Stroma:	10%
Necrosis:	30%
Pathology Verification notes from H&E review:	Tumor Stroma (Cellular): Desmoplastic reaction; Inflammation: Mild Lymphoplasmacytic infiltrate
CASE Diagnosis (from medical center path report):	Adenocarcinoma of colon, metastatic
Age:	57
Gender:	Male
Race:	White or Caucasian

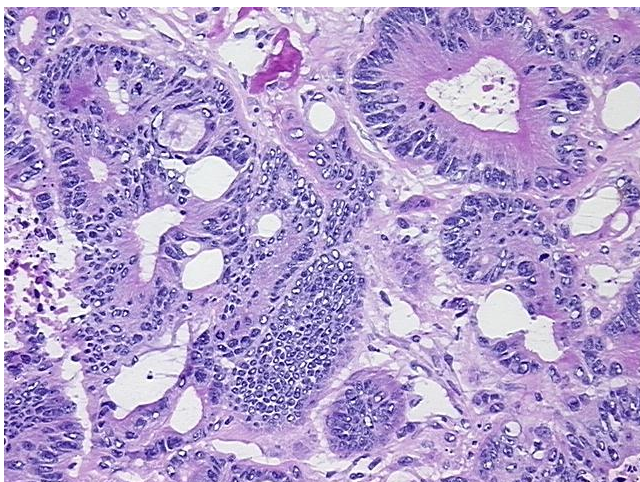


[View online »](#)

Tumor Grade:	AJCC G2: Moderately differentiated
Minimum Stage Grouping:	IV
T (Extent of Primary Tumor):	TX
N (Lymph node metastasis):	NX
M (Distant metastasis):	M1
Storage:	Store frozen tissue sections at -80°C.
Stability:	All frozen tissue sections are stable for 1 year from date of purchase if stored at -80°C without repeated freeze/thaws.

**Product images:**

4x Image



20x Image