

Product datasheet for **CS510518**

Frozen Tissue Sections, Ovary

Product data:

| | |
|---|--|
| Product Type: | Frozen Sections |
| Disease State: | Normal |
| Diagnosis Category: | Normal |
| Tissue: | Ovary |
| Frozen Sample ID: | FR00023BF1 |
| Case ID: | CI0000006454 |
| Tissue of Origin: | Ovary |
| Site of Finding: | Ovary |
| Appearance: | R |
| Sample Diagnosis (from Pathology Verification): | Within normal limits |
| Normal: | 100% |
| Lesional: | 0% |
| Tumor: | 0% |
| Tumor Hypo/Acellular Stroma: | 0% |
| Tumor Hypercellular Stroma: | 0% |
| Necrosis: | 0% |
| Pathology Verification notes from H&E review: | Non Tumor Structures: 30% Ovarian stroma, 20% Hilar vessels, 50% Corpus albicans |
| CASE Diagnosis (from medical center path report): | Cyst of ovary, epithelial inclusion |
| Age: | 54 |
| Gender: | Female |
| Race: | Black or African American |

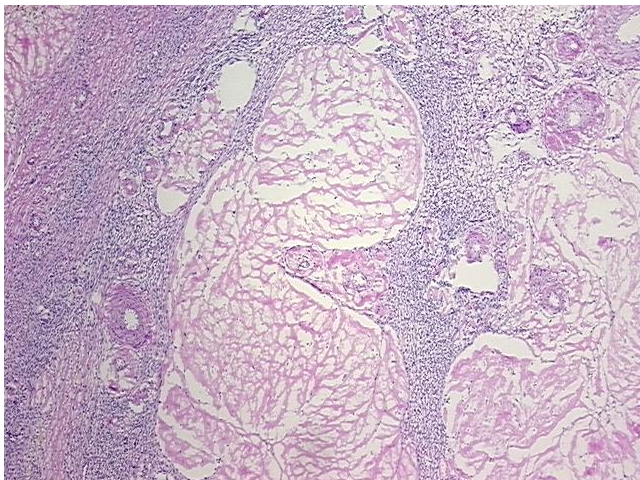


[View online »](#)

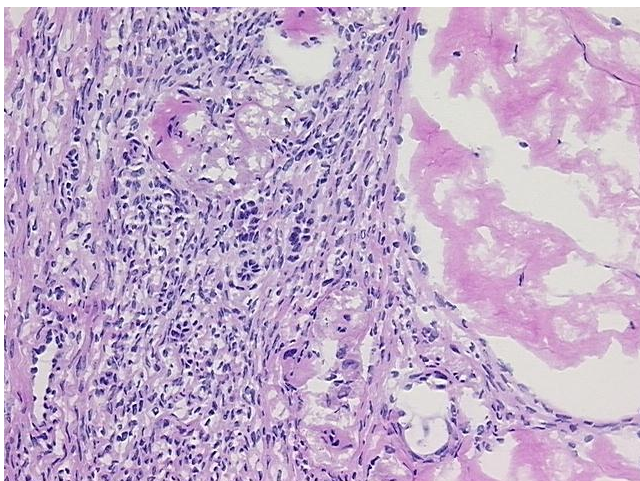
Storage: Store frozen tissue sections at -80°C.

Stability: All frozen tissue sections are stable for 1 year from date of purchase if stored at -80°C without repeated freeze/thaws.

Product images:



4x Image



20x Image