

Product datasheet for CS510298

Frozen Tissue Sections, Prostate

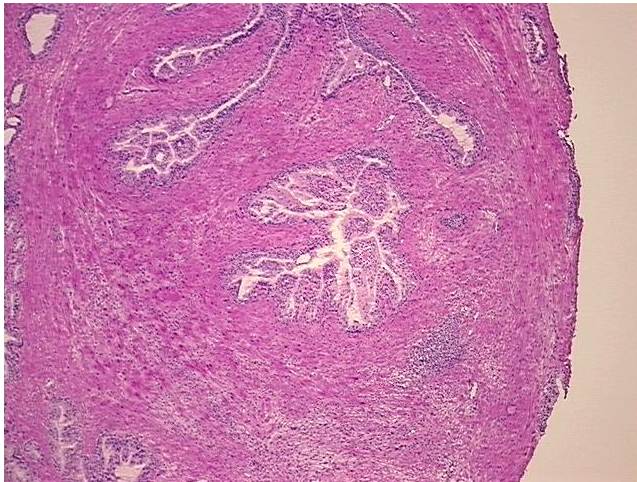
Product data:

| | |
|---------------------------------------------------|----------------------------------------------------|
| Product Type: | Frozen Sections |
| Disease State: | Other Disease |
| Diagnosis Category: | Prostatic Intraepithelial Neoplasia (PIN) |
| Tissue: | Prostate |
| Frozen Sample ID: | FR00026131 |
| Case ID: | CI0000006364 |
| Tissue of Origin: | Prostate |
| Site of Finding: | Prostate |
| Appearance: | L |
| Sample Diagnosis (from Pathology Verification): | Prostatic intraepithelial neoplasia |
| Normal: | 0% |
| Lesional: | 100% |
| Tumor: | 0% |
| Tumor Hypo/Acellular Stroma: | 0% |
| Tumor Hypercellular Stroma: | 0% |
| Necrosis: | 0% |
| Pathology Verification notes from H&E review: | 50% glandular epithelium, 50% fibromuscular stroma |
| CASE Diagnosis (from medical center path report): | Adenocarcinoma of prostate |
| Age: | 65 |
| Gender: | Male |
| Race: | White or Caucasian |

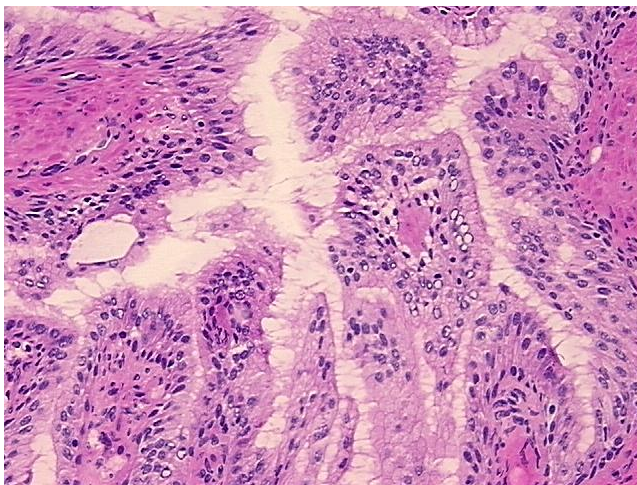


[View online »](#)

| | |
|------------------------------|--------------------------------------------------------------------------------------------------------------------------|
| Tumor Grade: | Gleason Score: 4+3=7/10 |
| T (Extent of Primary Tumor): | T2a |
| N (Lymph node metastasis): | N0 |
| Storage: | Store frozen tissue sections at -80°C. |
| Stability: | All frozen tissue sections are stable for 1 year from date of purchase if stored at -80°C without repeated freeze/thaws. |

Product images:

4x Image



20x Image