

Product datasheet for **CS509861**

Frozen Tissue Sections, Ovary: bilateral

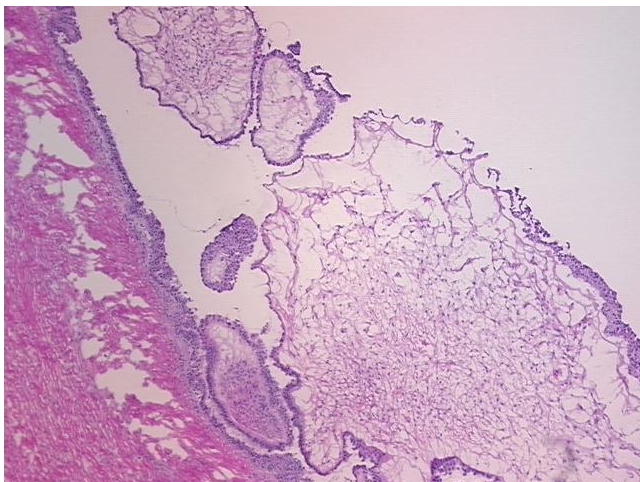
Product data:

Product Type:	Frozen Sections
Disease State:	Other Disease
Diagnosis Category:	Borderline Ovarian Tumor
Tissue:	Ovary
Frozen Sample ID:	FR0001F798
Case ID:	CI0000006180
Tissue of Origin:	Ovary: bilateral
Site of Finding:	Ovary: bilateral
Appearance:	T
Sample Diagnosis (from Pathology Verification):	Tumor of ovary, borderline
Normal:	60%
Lesional:	0%
Tumor:	30%
Tumor Hypo/Acellular Stroma:	0%
Tumor Hypercellular Stroma:	10%
Necrosis:	0%
Pathology Verification notes from H&E review:	95% ovarian stroma, 5% hilar vessels
CASE Diagnosis (from medical center path report):	Tumor of ovary, borderline
Age:	46
Gender:	Female
Race:	Not reported

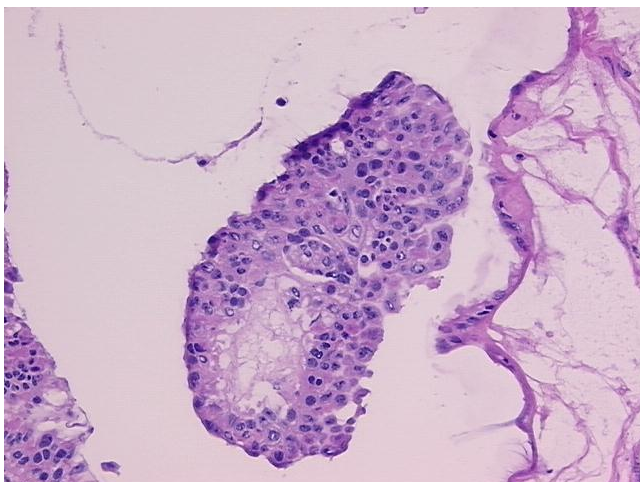


[View online »](#)

Tumor Grade:	Not Reported
Minimum Stage Grouping:	Not Reported
T (Extent of Primary Tumor):	Not Reported
N (Lymph node metastasis):	Not Reported
M (Distant metastasis):	Not Reported
Storage:	Store frozen tissue sections at -80°C.
Stability:	All frozen tissue sections are stable for 1 year from date of purchase if stored at -80°C without repeated freeze/thaws.

Product images:

4x Image



20x Image