

## Product datasheet for **CS508689**

### Frozen Tissue Sections, Colon: left

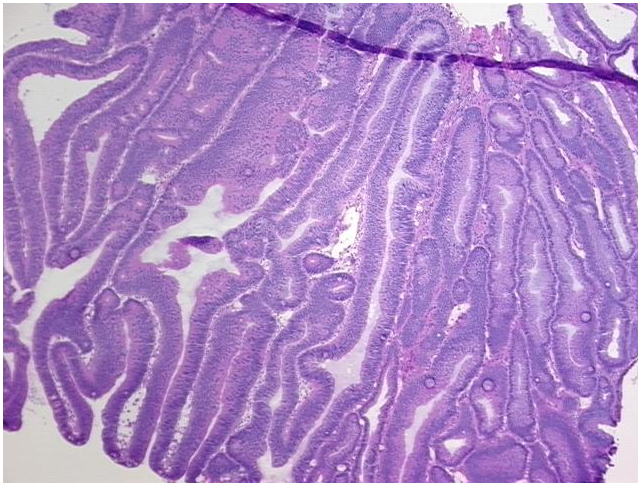
#### Product data:

Product Type:	Frozen Sections
Disease State:	Other Disease
Diagnosis Category:	Benign Tumors
Tissue:	Colon
Frozen Sample ID:	FR0001930F
Case ID:	CI0000005947
Tissue of Origin:	Colon: left
Site of Finding:	Colon: left
Appearance:	T
Sample Diagnosis (from Pathology Verification):	Adenoma of colon
Normal:	0%
Lesional:	0%
Tumor:	90%
Tumor Hypo/Acellular Stroma:	0%
Tumor Hypercellular Stroma:	10%
Necrosis:	0%
CASE Diagnosis (from medical center path report):	Adenoma of colon
Age:	46
Gender:	Female
Race:	Not reported
Tumor Grade:	Not Reported

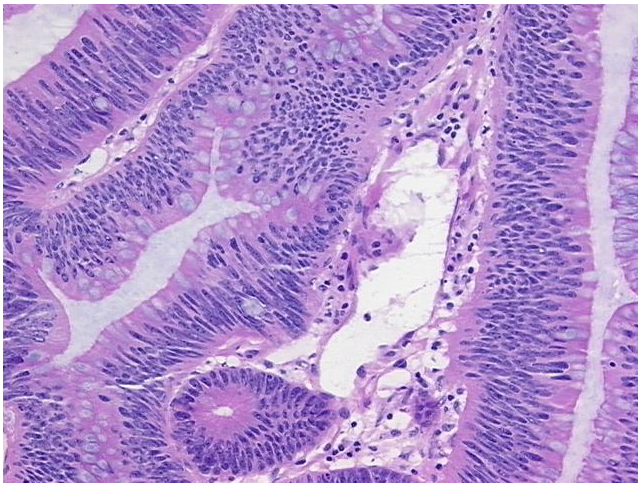


[View online »](#)

Minimum Stage Grouping:	Not Reported
T (Extent of Primary Tumor):	Not Reported
N (Lymph node metastasis):	Not Reported
M (Distant metastasis):	Not Reported
Storage:	Store frozen tissue sections at -80°C.
Stability:	All frozen tissue sections are stable for 1 year from date of purchase if stored at -80°C without repeated freeze/thaws.

**Product images:**

4x Image



20x Image