

## Product datasheet for CS508436

### Frozen Tissue Sections, Thyroid gland

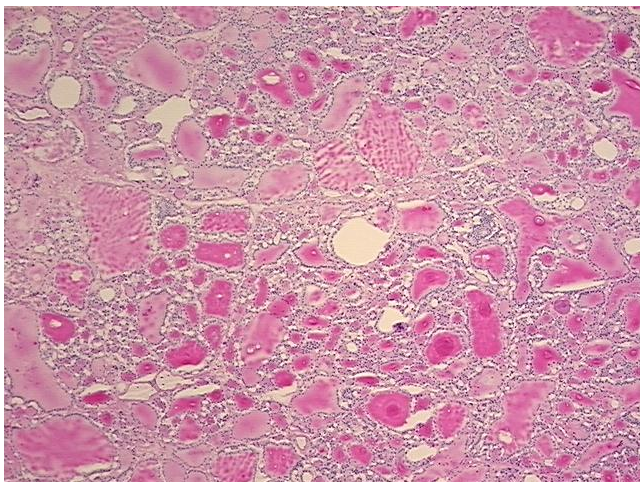
#### Product data:

|   |   |
|---|---|
| Product Type:                                     | Frozen Sections   |
| Disease State:                                    | Other Disease   |
| Diagnosis Category:                               | Goiter  |
| Tissue:   | Thyroid gland   |
| Frozen Sample ID:                                 | FR0001C489  |
| Case ID:  | CI0000005912  |
| Tissue of Origin:                                 | Thyroid gland   |
| Site of Finding:                                  | Thyroid gland   |
| Appearance:                                       | L   |
| Sample Diagnosis (from Pathology Verification):   | Goiter  |
| Normal:   | 0%  |
| Lesional:   | 100%  |
| Tumor:  | 0%  |
| Tumor Hypo/Acellular Stroma:                      | 0%  |
| Tumor Hypercellular Stroma:                       | 0%  |
| Necrosis:   | 0%  |
| Pathology Verification notes from H&E review:     | Non Tumor Structures: 90% Thyroid follicles, 10% Fibrous stroma |
| CASE Diagnosis (from medical center path report): | Adenoma of parathyroid gland                                    |
| Age:  | 65  |
| Gender:   | Female  |
| Race:   | White or Caucasian  |

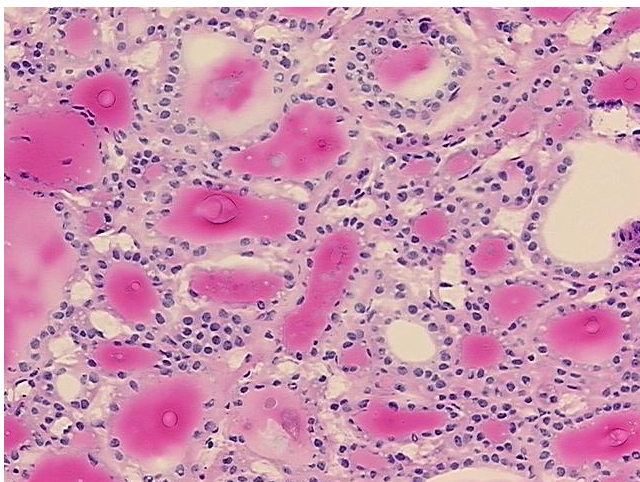


[View online »](#)

|                              |  |
|------------------------------|--|
| Tumor Grade:                 | Not Reported   |
| Minimum Stage Grouping:      | Not Reported   |
| T (Extent of Primary Tumor): | Not Reported   |
| N (Lymph node metastasis):   | Not Reported   |
| M (Distant metastasis):      | Not Reported   |
| Storage:                     | Store frozen tissue sections at -80°C.   |
| Stability:                   | All frozen tissue sections are stable for 1 year from date of purchase if stored at -80°C without repeated freeze/thaws. |

**Product images:**

4x Image



20x Image