

Product datasheet for **CS508287**

Frozen Tissue Sections, Kidney

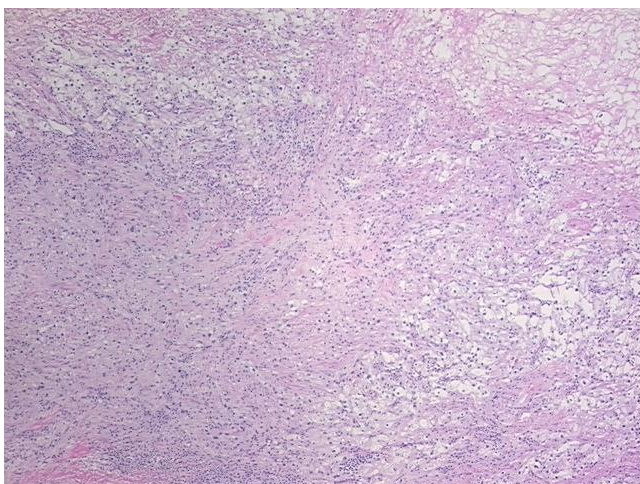
Product data:

Product Type:	Frozen Sections
Disease State:	Cancer
Diagnosis Category:	Renal Cell Carcinoma
Tissue:	Kidney
Frozen Sample ID:	FR5B336A24
Case ID:	CI0000005877
Tissue of Origin:	Kidney
Site of Finding:	Kidney
Appearance:	T
Sample Diagnosis (from Pathology Verification):	Carcinoma of kidney, renal cell, clear cell
Normal:	0%
Lesional:	0%
Tumor:	35%
Tumor Hypo/Acellular Stroma:	25%
Tumor Hypercellular Stroma:	5%
Necrosis:	35%
Pathology Verification notes from H&E review:	Tumor Stroma (Cellular): Desmoplastic reaction, Inflammatory cells; Tumor Stroma (Hypo/Acellular): Fibrosis; Inflammation: Moderate Mixed inflammatory infiltrate
CASE Diagnosis (from medical center path report):	Carcinoma of kidney, renal cell, clear cell
Age:	77
Gender:	Male
Race:	Not reported

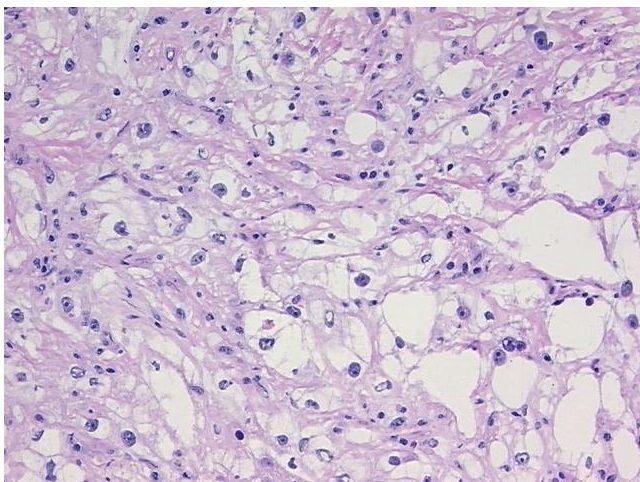


[View online »](#)

Tumor Grade:	Fuhrman G3: Nuclei very irregular
Minimum Stage Grouping:	III
T (Extent of Primary Tumor):	T3a
N (Lymph node metastasis):	N0
M (Distant metastasis):	MX
Storage:	Store frozen tissue sections at -80°C.
Stability:	All frozen tissue sections are stable for 1 year from date of purchase if stored at -80°C without repeated freeze/thaws.

Product images:

4x Image



20x Image