

Product datasheet for CS508070

Frozen Tissue Sections, Aortic valve

Product data:

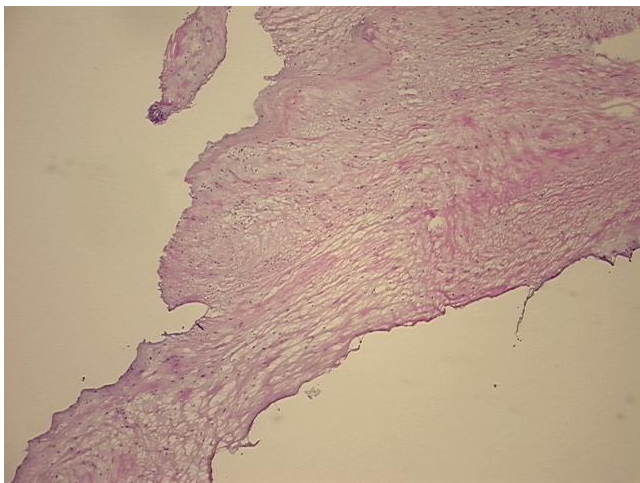
Product Type:	Frozen Sections
Disease State:	Other Disease
Diagnosis Category:	Heart Valve Disorder
Tissue:	Aortic valve
Frozen Sample ID:	FR0001995D
Case ID:	CI0000005759
Tissue of Origin:	Aortic valve
Site of Finding:	Aortic valve
Appearance:	L
Sample Diagnosis (from Pathology Verification):	Heart valve disorder
Normal:	0%
Lesional:	100%
Tumor:	0%
Tumor Hypo/Acellular Stroma:	0%
Tumor Hypercellular Stroma:	0%
Necrosis:	0%
CASE Diagnosis (from medical center path report):	Heart valve disorder
Age:	76
Gender:	Male
Race:	Not reported
Storage:	Store frozen tissue sections at -80°C.



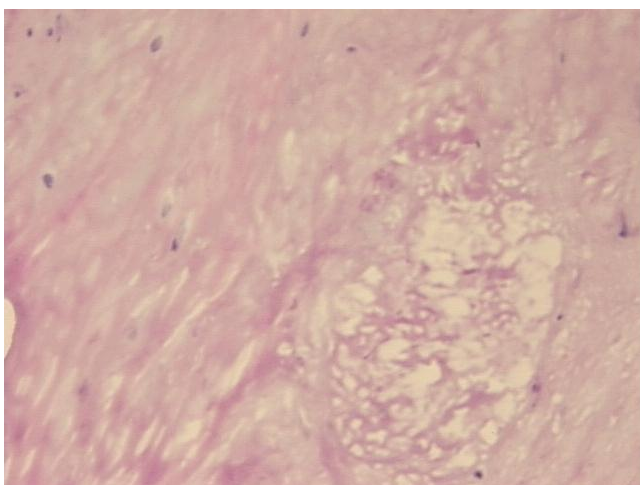
[View online »](#)

Stability: All frozen tissue sections are stable for 1 year from date of purchase if stored at -80°C without repeated freeze/thaws.

Product images:



4x Image



20x Image