

Product datasheet for **CS507978**

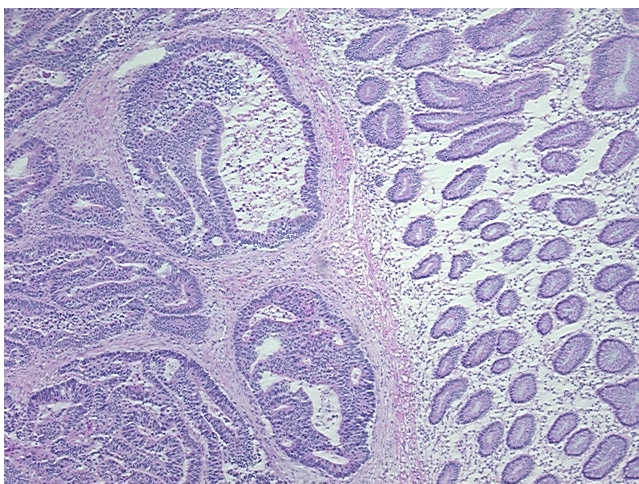
Frozen Tissue Sections, Colon: left

Product data:

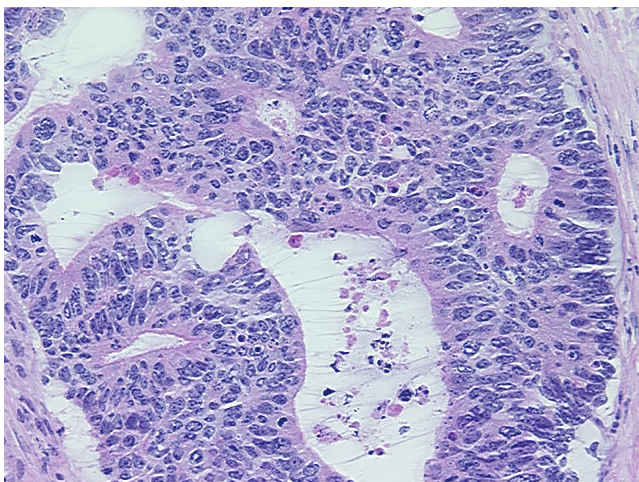
| | |
|---|-------------------------|
| Product Type: | Frozen Sections |
| Disease State: | Cancer |
| Diagnosis Category: | Colorectal Cancer |
| Tissue: | Colon |
| Frozen Sample ID: | FR000194BE |
| Case ID: | CI0000005732 |
| Tissue of Origin: | Colon: left |
| Site of Finding: | Colon: left |
| Appearance: | T |
| Sample Diagnosis (from Pathology Verification): | Adenocarcinoma of colon |
| Normal: | 40% |
| Lesional: | 0% |
| Tumor: | 30% |
| Tumor Hypo/Acellular Stroma: | 0% |
| Tumor Hypercellular Stroma: | 25% |
| Necrosis: | 5% |
| Pathology Verification notes from H&E review: | Normal: 100% mucosa |
| CASE Diagnosis (from medical center path report): | Adenocarcinoma of colon |
| Age: | 36 |
| Gender: | Male |
| Race: | Not reported |


[View online »](#)

| | |
|-------------------------------------|--|
| Tumor Grade: | AJCC G2: Moderately differentiated |
| Minimum Stage Grouping: | IV |
| T (Extent of Primary Tumor): | T3 |
| N (Lymph node metastasis): | N1 |
| M (Distant metastasis): | M1 |
| Storage: | Store frozen tissue sections at -80°C. |
| Stability: | All frozen tissue sections are stable for 1 year from date of purchase if stored at -80°C without repeated freeze/thaws. |

Product images:


4x Image



20x Image