

## Product datasheet for CS507889

### Frozen Tissue Sections, Endometrium

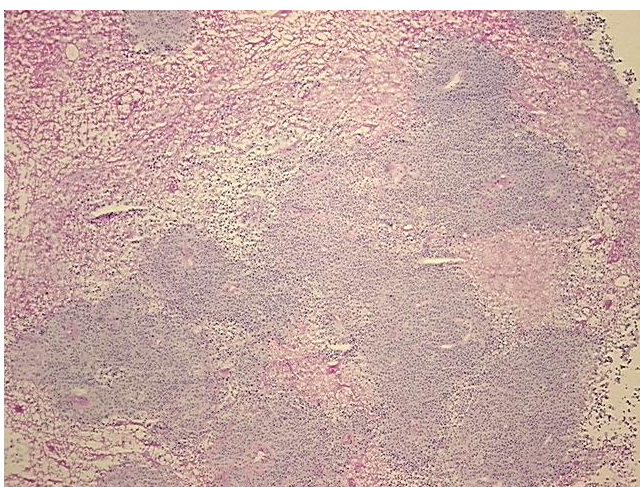
#### Product data:

Product Type:	Frozen Sections
Disease State:	Cancer
Diagnosis Category:	Endometrial Cancer
Tissue:	Endometrium
Frozen Sample ID:	FR5B3383DF
Case ID:	CI0000005715
Tissue of Origin:	Endometrium
Site of Finding:	Uterus
Appearance:	T
Sample Diagnosis (from Pathology Verification):	Adenocarcinoma of endometrium, endometrioid, squamous features
Normal:	0%
Lesional:	0%
Tumor:	10%
Tumor Hypo/Acellular Stroma:	0%
Tumor Hypercellular Stroma:	10%
Necrosis:	80%
CASE Diagnosis (from medical center path report):	Adenocarcinoma of endometrium, endometrioid, squamous features
Age:	70
Gender:	Female
Race:	White or Caucasian
Tumor Grade:	FIGO G2: Moderately differentiated

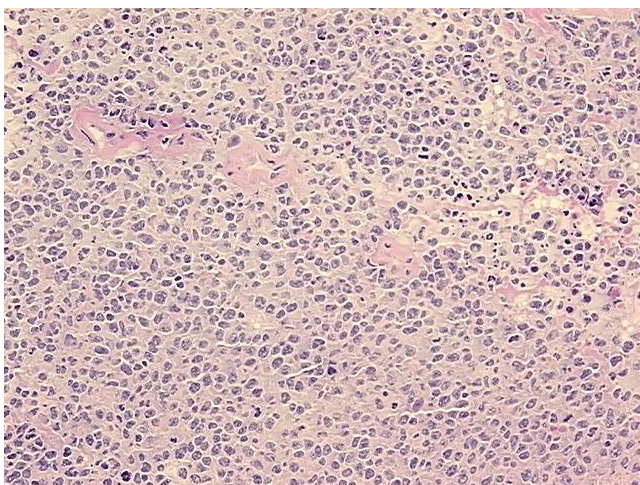


[View online »](#)

Minimum Stage Grouping:	IIIC
T (Extent of Primary Tumor):	T2a
N (Lymph node metastasis):	N1
M (Distant metastasis):	MX
Storage:	Store frozen tissue sections at -80°C.
Stability:	All frozen tissue sections are stable for 1 year from date of purchase if stored at -80°C without repeated freeze/thaws.

**Product images:**

4x Image



20x Image