

Product datasheet for CS507729

Frozen Tissue Sections, Breast

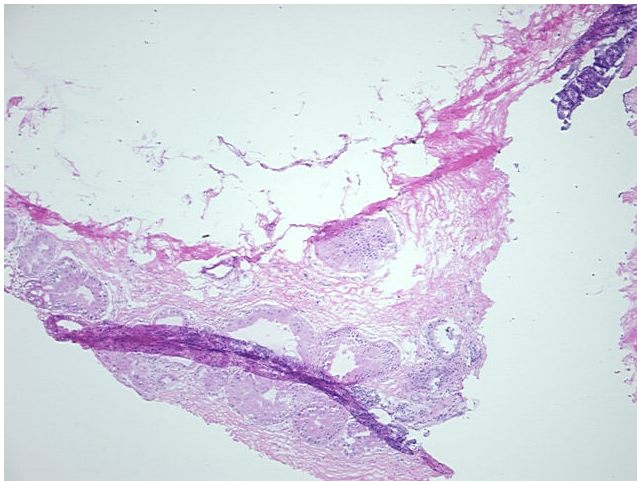
Product data:

Product Type:	Frozen Sections
Disease State:	Other Disease
Diagnosis Category:	Fibrocystic Breast
Tissue:	Breast
Frozen Sample ID:	FR65EDEA18
Case ID:	CI0000005693
Tissue of Origin:	Breast
Site of Finding:	Breast
Appearance:	L
Sample Diagnosis (from Pathology Verification):	Fibrocystic breast disease
Normal:	0%
Lesional:	100%
Tumor:	0%
Tumor Hypo/Acellular Stroma:	0%
Tumor Hypercellular Stroma:	0%
Necrosis:	0%
Pathology Verification notes from H&E review:	20% epithelium, 80% fibrofatty stroma; fibrocystic breast with apocrine metaplasia
CASE Diagnosis (from medical center path report):	Adenocarcinoma of breast, ductal
Age:	47
Gender:	Female
Race:	White or Caucasian

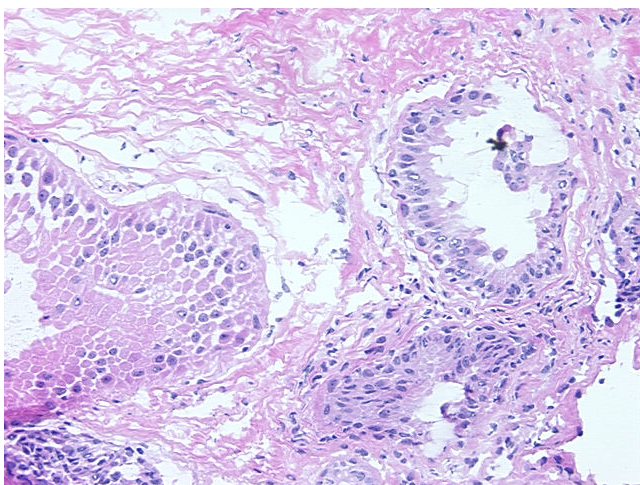


[View online »](#)

Tumor Grade:	NSABP Grade: Nuclear 2 of 3 & Histologic 3 of 3
Minimum Stage Grouping:	I
T (Extent of Primary Tumor):	T1c
N (Lymph node metastasis):	N0
M (Distant metastasis):	MX
Diagnostic Test Results:	Proliferation index ~ PI,High; Progesterone receptor ~ PR ! by IHC,Positive; Estrogen receptor ~ ER ! by IHC,Positive; HER2 ~ ERBB2 ~ Neu ! by IHC,Negative
Storage:	Store frozen tissue sections at -80°C.
Stability:	All frozen tissue sections are stable for 1 year from date of purchase if stored at -80°C without repeated freeze/thaws.

Product images:

4x Image



20x Image