

Product datasheet for **CS507645**

Frozen Tissue Sections, Cartilage

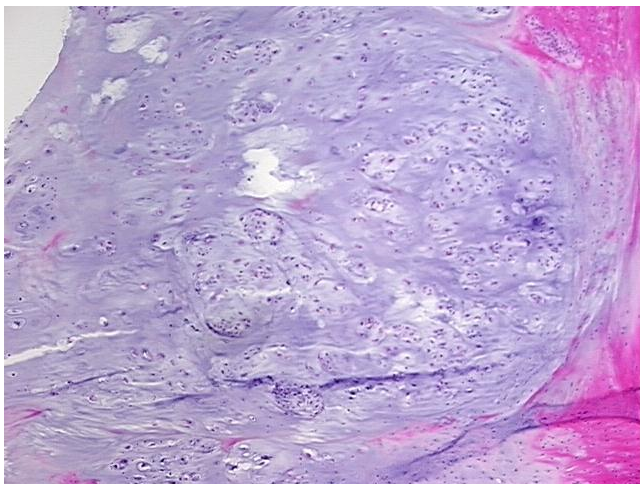
Product data:

| | |
|---|--|
| Product Type: | Frozen Sections |
| Disease State: | Cancer |
| Diagnosis Category: | Sarcoma |
| Tissue: | Cartilage |
| Frozen Sample ID: | FR0001CE6C |
| Case ID: | CI0000005688 |
| Tissue of Origin: | Cartilage |
| Site of Finding: | Chest wall |
| Appearance: | T |
| Sample Diagnosis (from Pathology Verification): | Chondrosarcoma |
| Normal: | 50% |
| Lesional: | 0% |
| Tumor: | 35% |
| Tumor Hypo/Acellular Stroma: | 0% |
| Tumor Hypercellular Stroma: | 15% |
| Necrosis: | 0% |
| Pathology Verification notes from H&E review: | Non Tumor Structures: 90% fat, 10% vessels |
| CASE Diagnosis (from medical center path report): | Chondrosarcoma |
| Age: | 61 |
| Gender: | Female |
| Race: | White or Caucasian |

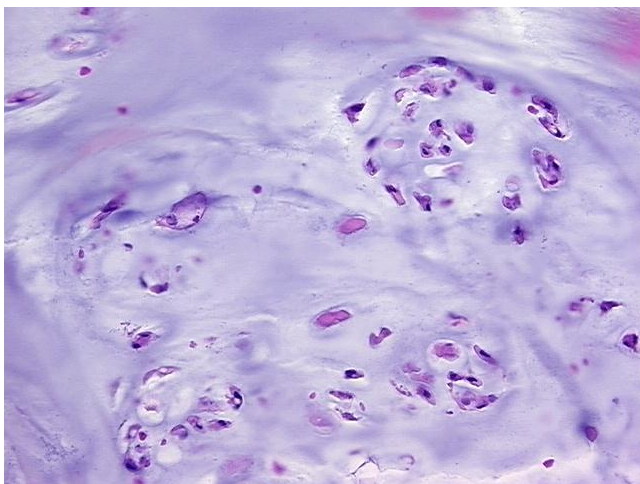


[View online »](#)

| | |
|------------------------------|--|
| Tumor Grade: | AJCC G1: Well differentiated |
| Minimum Stage Grouping: | IB |
| T (Extent of Primary Tumor): | T2 |
| N (Lymph node metastasis): | NX |
| M (Distant metastasis): | MX |
| Storage: | Store frozen tissue sections at -80°C. |
| Stability: | All frozen tissue sections are stable for 1 year from date of purchase if stored at -80°C without repeated freeze/thaws. |

Product images:

4x Image



20x Image