

Product datasheet for **CS507537**

Frozen Tissue Sections, Lung

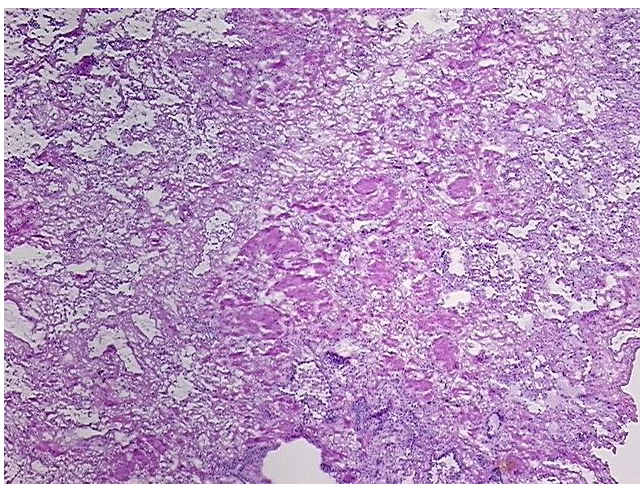
Product data:

| | |
|---|--|
| Product Type: | Frozen Sections |
| Disease State: | Other Disease |
| Diagnosis Category: | Pneumonia |
| Tissue: | Lung |
| Frozen Sample ID: | FR0001A490 |
| Case ID: | CI0000005675 |
| Tissue of Origin: | Lung |
| Site of Finding: | Lung |
| Appearance: | L |
| Sample Diagnosis (from Pathology Verification): | Pneumonia, interstitial, nonspecific, fibrosing |
| Normal: | 15% |
| Lesional: | 85% |
| Tumor: | 0% |
| Tumor Hypo/Acellular Stroma: | 0% |
| Tumor Hypercellular Stroma: | 0% |
| Necrosis: | 0% |
| Pathology Verification notes from H&E review: | 25% alveoli, 25% bronchioles, 50%fibrovascular septa |
| CASE Diagnosis (from medical center path report): | Carcinoma of lung, squamous cell |
| Age: | 68 |
| Gender: | Male |
| Race: | White or Caucasian |

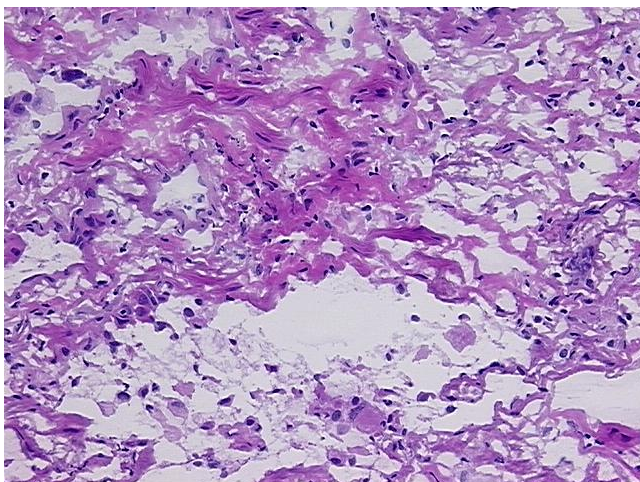


[View online »](#)

| | |
|------------------------------|--|
| Tumor Grade: | Not Reported |
| Minimum Stage Grouping: | IA |
| T (Extent of Primary Tumor): | T1 |
| N (Lymph node metastasis): | N0 |
| M (Distant metastasis): | MX |
| Storage: | Store frozen tissue sections at -80°C. |
| Stability: | All frozen tissue sections are stable for 1 year from date of purchase if stored at -80°C without repeated freeze/thaws. |

Product images:

4x Image



20x Image