

Product datasheet for **CS507248**

Frozen Tissue Sections, Lung

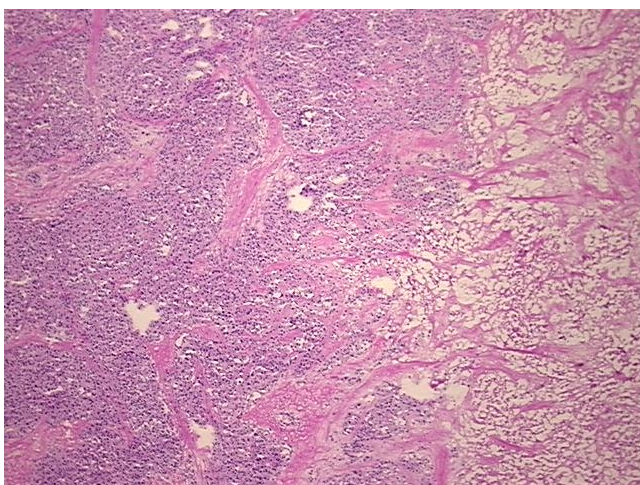
Product data:

Product Type:	Frozen Sections
Disease State:	Cancer
Diagnosis Category:	Carcinoid/Neuroendocrine Tumors
Tissue:	Lung
Frozen Sample ID:	FR00019F45
Case ID:	CI0000005646
Tissue of Origin:	Lung
Site of Finding:	Lymph node
Appearance:	T
Sample Diagnosis (from Pathology Verification):	Tumor of lung, carcinoid, metastatic
Normal:	0%
Lesional:	0%
Tumor:	40%
Tumor Hypo/Acellular Stroma:	0%
Tumor Hypercellular Stroma:	20%
Necrosis:	40%
CASE Diagnosis (from medical center path report):	Tumor of lung, carcinoid
Age:	51
Gender:	Male
Race:	Black or African American
Tumor Grade:	Not Reported

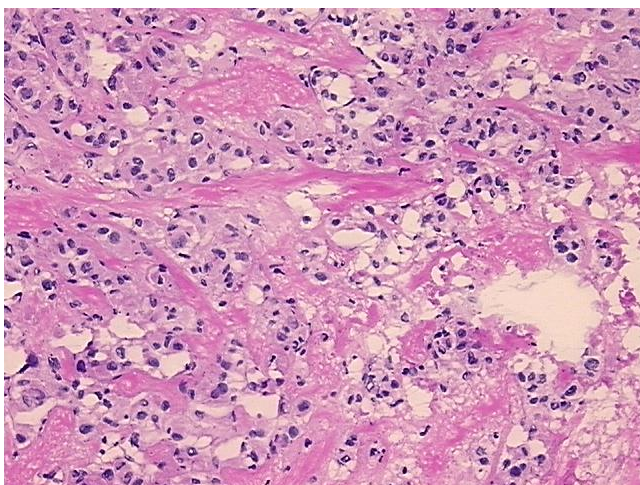


[View online »](#)

Minimum Stage Grouping:	IIIA
T (Extent of Primary Tumor):	T2
N (Lymph node metastasis):	N2
M (Distant metastasis):	MX
Diagnostic Test Results:	ERBB1 ~ EGFR ~ Epidermal growth factor receptor ! by IHC,Positive, moderate; HER2 ~ ERBB2 ~ Neu ! by IHC,Negative
Storage:	Store frozen tissue sections at -80°C.
Stability:	All frozen tissue sections are stable for 1 year from date of purchase if stored at -80°C without repeated freeze/thaws.

Product images:

4x Image



20x Image