

## Product datasheet for **CS506784**

### Frozen Tissue Sections, Lung

#### Product data:

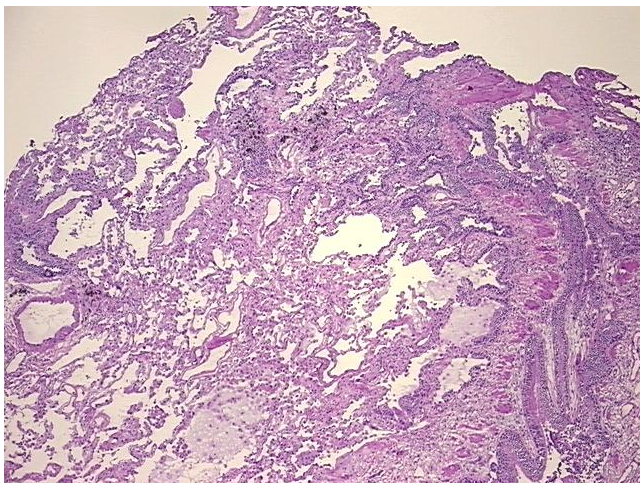
Product Type:	Frozen Sections
Disease State:	Other Disease
Diagnosis Category:	Pneumonia
Tissue:	Lung
Frozen Sample ID:	FR5B3382A2
Case ID:	CI0000005593
Tissue of Origin:	Lung
Site of Finding:	Lung
Appearance:	L
Sample Diagnosis (from Pathology Verification):	Pneumonia, interstitial, chronic
Normal:	0%
Lesional:	100%
Tumor:	0%
Tumor Hypo/Acellular Stroma:	0%
Tumor Hypercellular Stroma:	0%
Necrosis:	0%
Pathology Verification notes from H&E review:	No normal architecture in lesional component
CASE Diagnosis (from medical center path report):	Carcinoma of lung, small cell
Age:	76
Gender:	Male
Race:	White or Caucasian



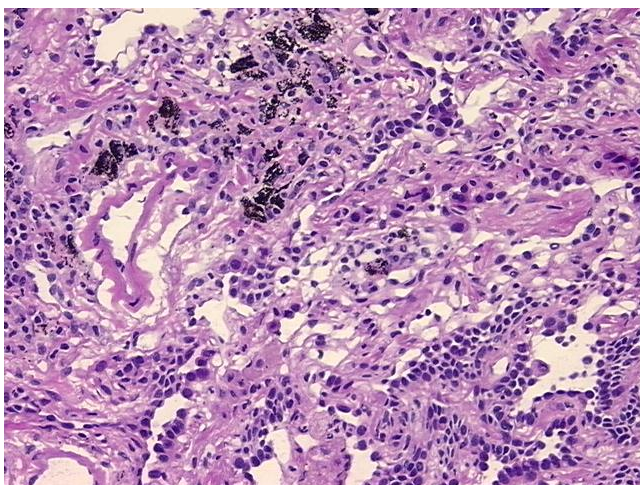
[View online »](#)

<b>Tumor Grade:</b>	Not Reported
<b>Minimum Stage Grouping:</b>	IIIB
<b>T (Extent of Primary Tumor):</b>	T4
<b>N (Lymph node metastasis):</b>	N2
<b>M (Distant metastasis):</b>	MX
<b>Diagnostic Test Results:</b>	Cytokeratin (Pan) ~ Keratin, Pan ! by IHC,Positive; Synaptophysin ~ SYN ! by IHC,Positive; Chromogranin A ~ Parathyroid secretory protein 1 ! by IHC,Positive
<b>Storage:</b>	Store frozen tissue sections at -80°C.
<b>Stability:</b>	All frozen tissue sections are stable for 1 year from date of purchase if stored at -80°C without repeated freeze/thaws.

### Product images:



4x Image



20x Image