

## Product datasheet for **CS506340**

### Frozen Tissue Sections, Endometriotic tissue

#### Product data:

Product Type:	Frozen Sections
Disease State:	Other Disease
Diagnosis Category:	Endometriosis
Tissue:	Endometriotic tissue
Frozen Sample ID:	FR0001A18B
Case ID:	CI0000005536
Tissue of Origin:	Endometriotic tissue
Site of Finding:	Ovary: right
Appearance:	L
Sample Diagnosis (from Pathology Verification):	Endometriosis
Normal:	90%
Lesional:	10%
Tumor:	0%
Tumor Hypo/Acellular Stroma:	0%
Tumor Hypercellular Stroma:	0%
Necrosis:	0%
Pathology Verification notes from H&E review:	10% endometriosis: 7% epithelium, 3% stroma; 90% normal ovary: 60% ovarian stroma, 30% hilar vessels
CASE Diagnosis (from medical center path report):	Endometriosis
Age:	27
Gender:	Female
Race:	White or Caucasian

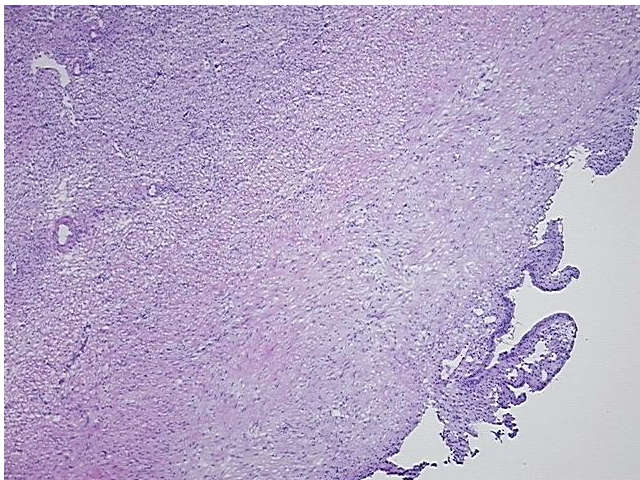


[View online »](#)

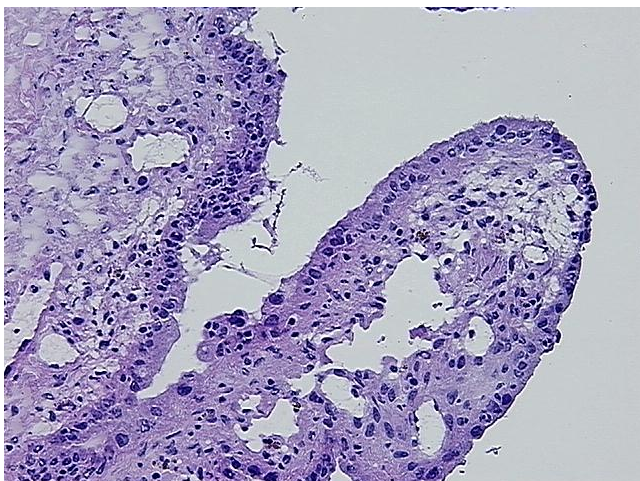
**Storage:** Store frozen tissue sections at -80°C.

**Stability:** All frozen tissue sections are stable for 1 year from date of purchase if stored at -80°C without repeated freeze/thaws.

**Product images:**



4x Image



20x Image