

Product datasheet for **CS506265**

Frozen Tissue Sections, Thyroid gland

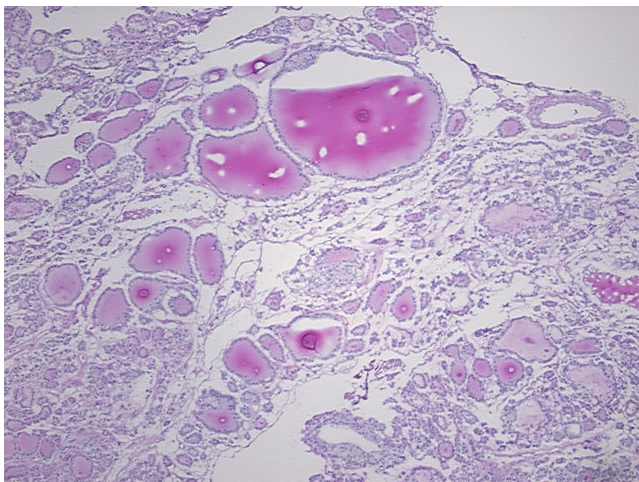
Product data:

Product Type:	Frozen Sections
Disease State:	Other Disease
Diagnosis Category:	Goiter
Tissue:	Thyroid gland
Frozen Sample ID:	FR00019095
Case ID:	CI0000005520
Tissue of Origin:	Thyroid gland
Site of Finding:	Thyroid gland
Appearance:	L
Sample Diagnosis (from Pathology Verification):	Goiter, multinodular
Normal:	0%
Lesional:	100%
Tumor:	0%
Tumor Hypo/Acellular Stroma:	0%
Tumor Hypercellular Stroma:	0%
Necrosis:	0%
Pathology Verification notes from H&E review:	90% thyroid follicles, 10% fibrous stroma; features suggest multinodular goiter (perhaps with dominant nodule)
CASE Diagnosis (from medical center path report):	Goiter
Age:	50
Gender:	Male
Race:	White or Caucasian

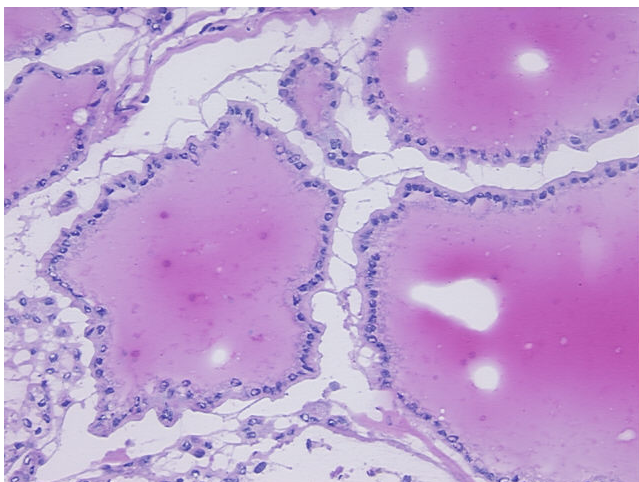


[View online »](#)

Tumor Grade:	Not Reported
Minimum Stage Grouping:	Not Reported
T (Extent of Primary Tumor):	Not Reported
N (Lymph node metastasis):	Not Reported
M (Distant metastasis):	Not Reported
Storage:	Store frozen tissue sections at -80°C.
Stability:	All frozen tissue sections are stable for 1 year from date of purchase if stored at -80°C without repeated freeze/thaws.

Product images:

4x Image



20x Image