

## Product datasheet for CS506141

### Frozen Tissue Sections, Colon: transverse

#### Product data:

Product Type:	Frozen Sections
Disease State:	Normal
Diagnosis Category:	Normal
Tissue:	Colon
Frozen Sample ID:	FR5B337320
Case ID:	CI0000005501
Tissue of Origin:	Colon: transverse
Site of Finding:	Colon: transverse
Appearance:	R
Sample Diagnosis (from Pathology Verification):	Within normal limits
Normal:	100%
Lesional:	0%
Tumor:	0%
Tumor Hypo/Acellular Stroma:	0%
Tumor Hypercellular Stroma:	0%
Necrosis:	0%
Pathology Verification notes from H&E review:	20% mucosa, 10% submucosa, 70% muscle
CASE Diagnosis (from medical center path report):	Colitis, ulcerative, chronic active
Age:	47
Gender:	Male
Race:	White or Caucasian

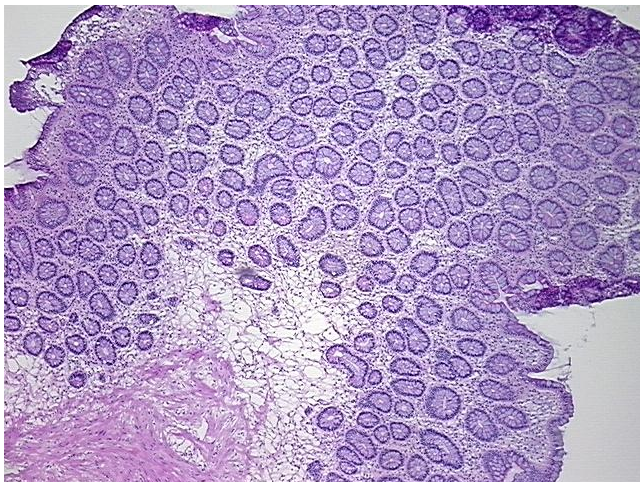


[View online »](#)

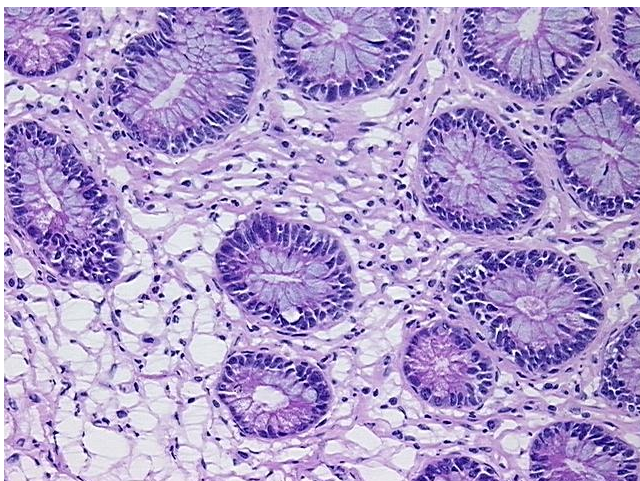
**Storage:** Store frozen tissue sections at -80°C.

**Stability:** All frozen tissue sections are stable for 1 year from date of purchase if stored at -80°C without repeated freeze/thaws.

**Product images:**



4x Image



20x Image