

Product datasheet for **CS505967**

Frozen Tissue Sections, Stomach

Product data:

Product Type:	Frozen Sections
Disease State:	Other Disease
Diagnosis Category:	Polyps
Tissue:	Stomach
Frozen Sample ID:	FR5B337041
Case ID:	CI0000005467
Tissue of Origin:	Stomach
Site of Finding:	Stomach
Appearance:	L
Sample Diagnosis (from Pathology Verification):	Polyp of stomach, hyperplastic
Normal:	0%
Lesional:	100%
Tumor:	0%
Tumor Hypo/Acellular Stroma:	0%
Tumor Hypercellular Stroma:	0%
Necrosis:	0%
Pathology Verification notes from H&E review:	Inflammation: Mild Mixed inflammatory infiltrate; Non Tumor Structures: 60% Mucosa, 40% Submucosa
CASE Diagnosis (from medical center path report):	Polyp of stomach, hyperplastic
Age:	69
Gender:	Female
Race:	White or Caucasian

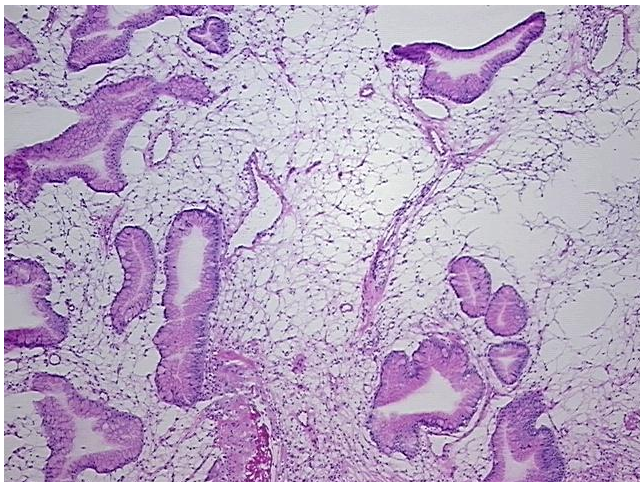


[View online »](#)

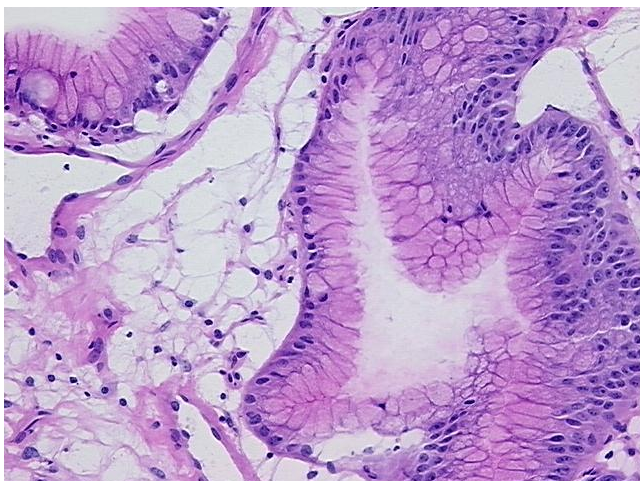
Storage: Store frozen tissue sections at -80°C.

Stability: All frozen tissue sections are stable for 1 year from date of purchase if stored at -80°C without repeated freeze/thaws.

Product images:



4x Image



20x Image