

Product datasheet for **CS505786**

Frozen Tissue Sections, Ileum

Product data:

Product Type:	Frozen Sections
Disease State:	Other Disease
Diagnosis Category:	Inflammatory Bowel Disease (IBD)
Tissue:	Small intestine
Frozen Sample ID:	FR00019A29
Case ID:	CI0000005419
Tissue of Origin:	Ileum
Site of Finding:	Ileum
Appearance:	L
Sample Diagnosis (from Pathology Verification):	Crohns disease
Normal:	0%
Lesional:	100%
Tumor:	0%
Tumor Hypo/Acellular Stroma:	0%
Tumor Hypercellular Stroma:	0%
Necrosis:	0%
Pathology Verification notes from H&E review:	15% mucosa, 10% submucosa, 75% muscle
CASE Diagnosis (from medical center path report):	Crohns disease
Age:	48
Gender:	Male
Race:	Not reported

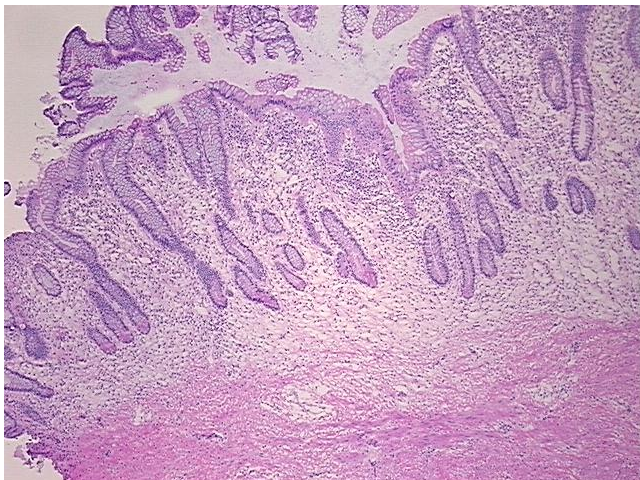


[View online »](#)

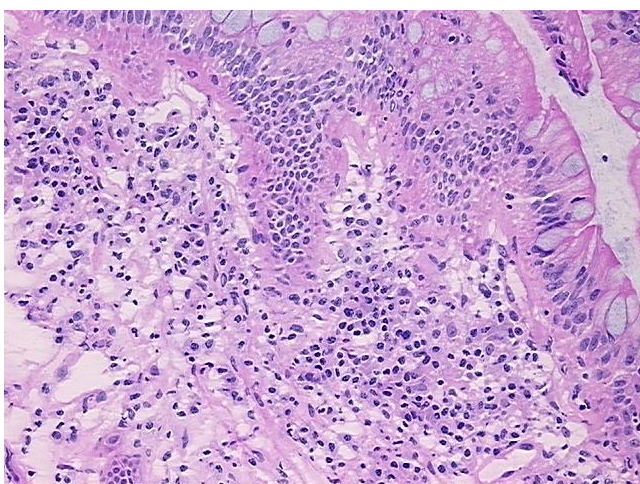
Storage: Store frozen tissue sections at -80°C.

Stability: All frozen tissue sections are stable for 1 year from date of purchase if stored at -80°C without repeated freeze/thaws.

Product images:



4x Image



20x Image