

## Product datasheet for **CS505703**

### Frozen Tissue Sections, Colon

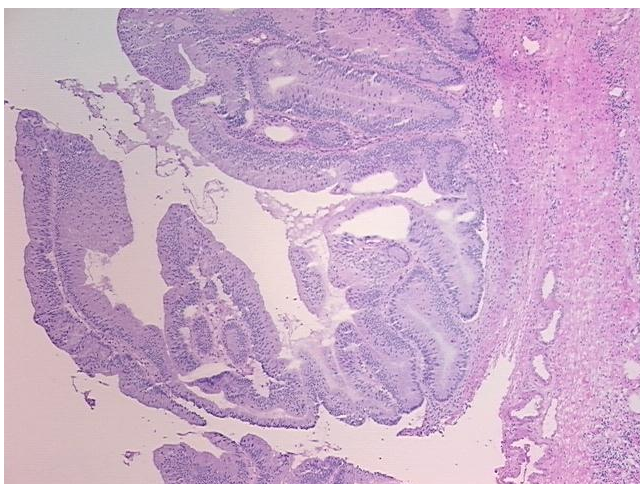
#### Product data:

Product Type:	Frozen Sections
Disease State:	Other Disease
Diagnosis Category:	Benign Tumors
Tissue:	Colon
Frozen Sample ID:	FR0001895C
Case ID:	CI0000005401
Tissue of Origin:	Colon
Site of Finding:	Colon
Appearance:	T
Sample Diagnosis (from Pathology Verification):	Adenoma of colon
Normal:	25%
Lesional:	0%
Tumor:	50%
Tumor Hypo/Acellular Stroma:	0%
Tumor Hypercellular Stroma:	25%
Necrosis:	0%
Pathology Verification notes from H&E review:	tumor stroma contains prominent lymphoplasmacytic infiltrate
CASE Diagnosis (from medical center path report):	Adenocarcinoma of colon
Age:	83
Gender:	Female
Race:	Not reported

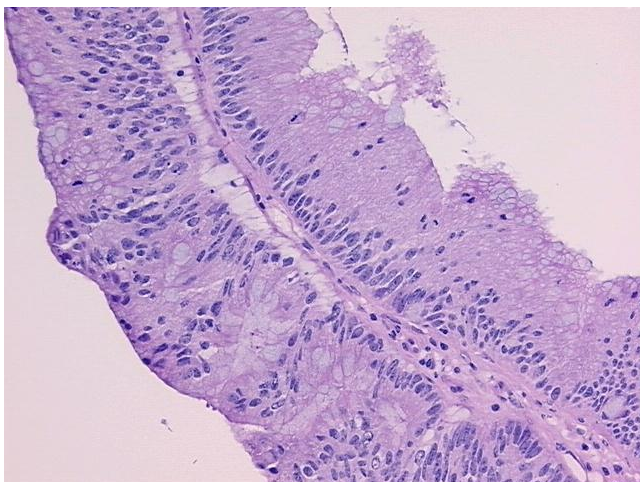


[View online »](#)

Tumor Grade:	AJCC G1: Well differentiated
Minimum Stage Grouping:	IIIA
T (Extent of Primary Tumor):	T1
N (Lymph node metastasis):	N1
M (Distant metastasis):	MX
Storage:	Store frozen tissue sections at -80°C.
Stability:	All frozen tissue sections are stable for 1 year from date of purchase if stored at -80°C without repeated freeze/thaws.

**Product images:**

4x Image



20x Image