

Product datasheet for CS505569

Frozen Tissue Sections, Breast

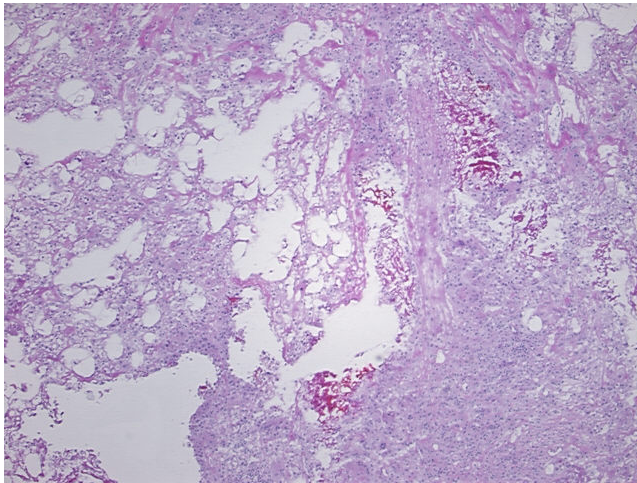
Product data:

| | |
|---|---|
| Product Type: | Frozen Sections |
| Disease State: | Other Disease |
| Diagnosis Category: | Biopsy Site Changes |
| Tissue: | Breast |
| Frozen Sample ID: | FR00018837 |
| Case ID: | CI0000005367 |
| Tissue of Origin: | Breast |
| Site of Finding: | Breast |
| Appearance: | L |
| Sample Diagnosis (from Pathology Verification): | Biopsy site changes |
| Normal: | 0% |
| Lesional: | 100% |
| Tumor: | 0% |
| Tumor Hypo/Acellular Stroma: | 0% |
| Tumor Hypercellular Stroma: | 0% |
| Necrosis: | 0% |
| Pathology Verification notes from H&E review: | 5% glandular epithelium, 75% fibrous stroma with foreign body type giant cells, 20% fat |
| CASE Diagnosis (from medical center path report): | Carcinoma in situ of breast, ductal |
| Age: | 52 |
| Gender: | Female |
| Race: | Not reported |

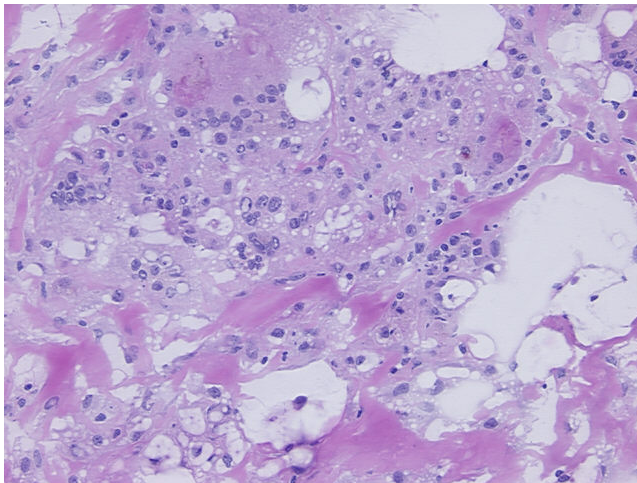


[View online »](#)

| | |
|------------------------------|--|
| Tumor Grade: | Nottingham G3: 8-9 points High combined grade (unfavorable) |
| T (Extent of Primary Tumor): | Tis |
| N (Lymph node metastasis): | N0 |
| M (Distant metastasis): | MX |
| Storage: | Store frozen tissue sections at -80°C. |
| Stability: | All frozen tissue sections are stable for 1 year from date of purchase if stored at -80°C without repeated freeze/thaws. |

Product images:

4x Image



20x Image