

Product datasheet for CS505253

Frozen Tissue Sections, Bile duct

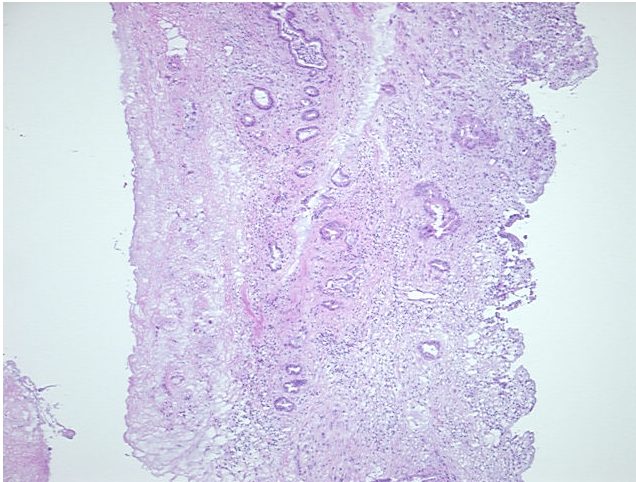
Product data:

Product Type:	Frozen Sections
Disease State:	Other Disease
Diagnosis Category:	Dysplasia
Tissue:	Bile duct
Frozen Sample ID:	FR5B336573
Case ID:	CI0000005274
Tissue of Origin:	Bile duct
Site of Finding:	Bile duct
Appearance:	L
Sample Diagnosis (from Pathology Verification):	The common bile duct epithelial dysplasia
Normal:	40%
Lesional:	60%
Tumor:	0%
Tumor Hypo/Acellular Stroma:	0%
Tumor Hypercellular Stroma:	0%
Necrosis:	0%
Pathology Verification notes from H&E review:	lesion: 40% epithelium, 60% fibrotic wall with chronic inflammation
CASE Diagnosis (from medical center path report):	Adenocarcinoma of bile duct
Age:	67
Gender:	Female
Race:	Not reported

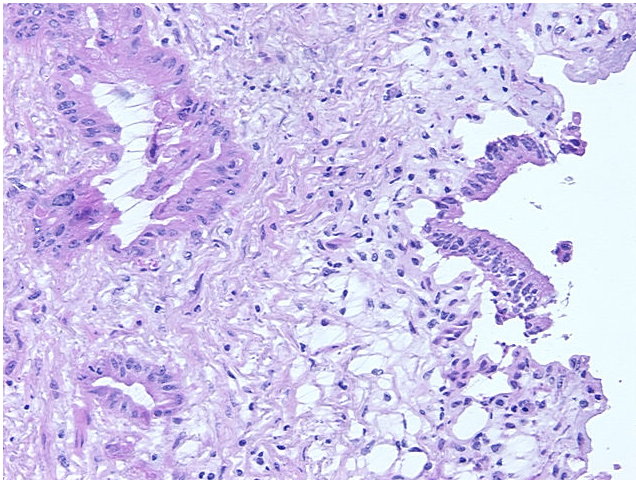


[View online »](#)

Tumor Grade:	AJCC G2: Moderately differentiated
Minimum Stage Grouping:	IIB
T (Extent of Primary Tumor):	T3
N (Lymph node metastasis):	N1
M (Distant metastasis):	MX
Storage:	Store frozen tissue sections at -80°C.
Stability:	All frozen tissue sections are stable for 1 year from date of purchase if stored at -80°C without repeated freeze/thaws.

Product images:

4x Image



20x Image