

## Product datasheet for **CS505054**

### Frozen Tissue Sections, Lung

#### Product data:

<b>Product Type:</b>	Frozen Sections
<b>Disease State:</b>	Other Disease
<b>Diagnosis Category:</b>	Chronic Obstructive Pulmonary Disease (COPD)
<b>Tissue:</b>	Lung
<b>Frozen Sample ID:</b>	FR5B335D05
<b>Case ID:</b>	CI0000005211
<b>Tissue of Origin:</b>	Lung
<b>Site of Finding:</b>	Lung
<b>Appearance:</b>	L
<b>Sample Diagnosis (from Pathology Verification):</b>	Emphysema, centrilobular
<b>Normal:</b>	0%
<b>Lesional:</b>	100%
<b>Tumor:</b>	0%
<b>Tumor Hypo/Acellular Stroma:</b>	0%
<b>Tumor Hypercellular Stroma:</b>	0%
<b>Necrosis:</b>	0%
<b>Pathology Verification notes from H&amp;E review:</b>	80% alveoli, 5% bronchioles, 15% fibrovascular septa



**CASE Diagnosis (from medical center path report):** Emphysema, centrilobular

**Age:** 62

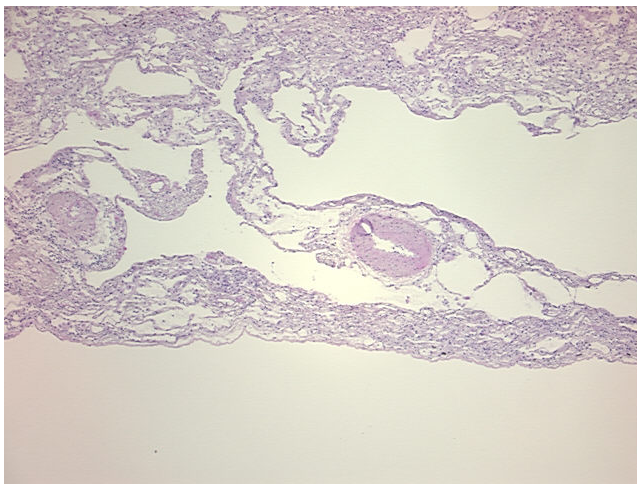
**Gender:** Male

**Race:** White or Caucasian

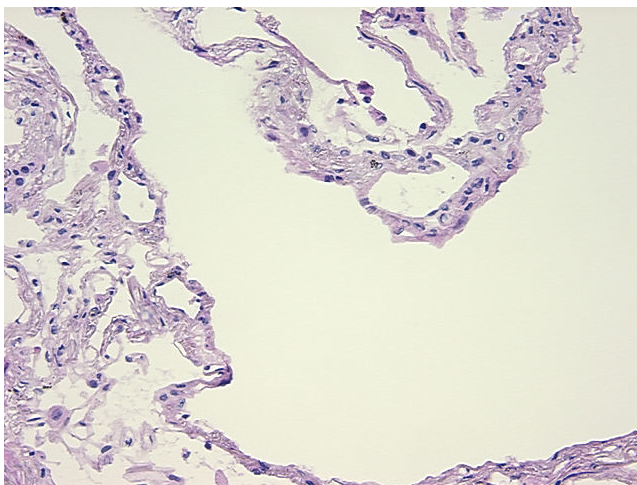
**Storage:** Store frozen tissue sections at  $-80^{\circ}\text{C}$ .

**Stability:** All frozen tissue sections are stable for 1 year from date of purchase if stored at  $-80^{\circ}\text{C}$  without repeated freeze/thaws.

**Product images:**



4x Image



20x Image