

## Product datasheet for **CS504973**

### Frozen Tissue Sections, Lung: left lower lobe

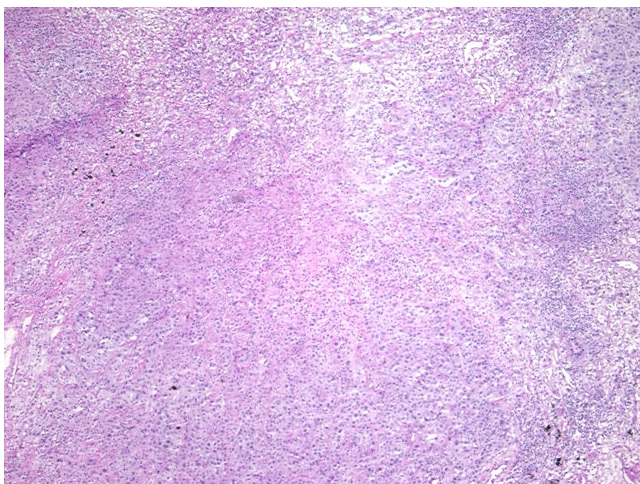
#### Product data:

Product Type:	Frozen Sections
Disease State:	Cancer
Diagnosis Category:	Lung Cancer
Tissue:	Lung
Frozen Sample ID:	FR00017A5B
Case ID:	CI0000005203
Tissue of Origin:	Lung: left lower lobe
Site of Finding:	Lung: left lower lobe
Appearance:	T
Sample Diagnosis (from Pathology Verification):	Carcinoma of lung, non-small cell
Normal:	0%
Lesional:	0%
Tumor:	40%
Tumor Hypo/Acellular Stroma:	15%
Tumor Hypercellular Stroma:	45%
Necrosis:	0%
Pathology Verification notes from H&E review:	The histologic features of this neoplasm include areas of moderate to poorly differentiated squamous cell carcinoma and adenocarcinoma, and areas with a lepidic growth pattern of bronchiolo-alveolar carcinoma
CASE Diagnosis (from medical center path report):	Carcinoma of lung, non-small cell
Age:	70
Gender:	Female

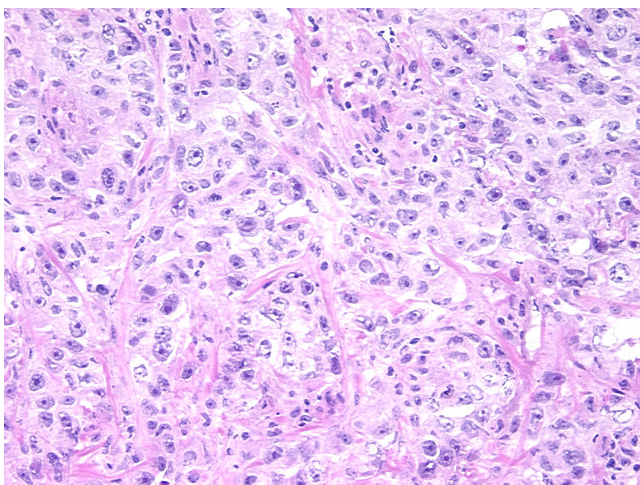


[View online »](#)

Race:	White or Caucasian
Tumor Grade:	AJCC G3: Poorly differentiated
Minimum Stage Grouping:	IIIA
T (Extent of Primary Tumor):	T2
N (Lymph node metastasis):	N2
M (Distant metastasis):	MX
Storage:	Store frozen tissue sections at -80°C.
Stability:	All frozen tissue sections are stable for 1 year from date of purchase if stored at -80°C without repeated freeze/thaws.

**Product images:**

4x Image



20x Image