

Product datasheet for **CS504963**

Frozen Tissue Sections, Colon: sigmoid

Product data:

Product Type:	Frozen Sections
Disease State:	Normal
Diagnosis Category:	Normal
Tissue:	Colon
Frozen Sample ID:	FR000179AC
Case ID:	CI0000005202
Tissue of Origin:	Colon: sigmoid
Site of Finding:	Colon: sigmoid
Appearance:	R
Sample Diagnosis (from Pathology Verification):	Within normal limits
Normal:	100%
Lesional:	0%
Tumor:	0%
Tumor Hypo/Acellular Stroma:	0%
Tumor Hypercellular Stroma:	0%
Necrosis:	0%
Pathology Verification notes from H&E review:	35% mucosa, 35% submucosa, 30% muscle
CASE Diagnosis (from medical center path report):	Polyp of intestine, hyperplastic
Age:	25
Gender:	Female
Race:	White or Caucasian

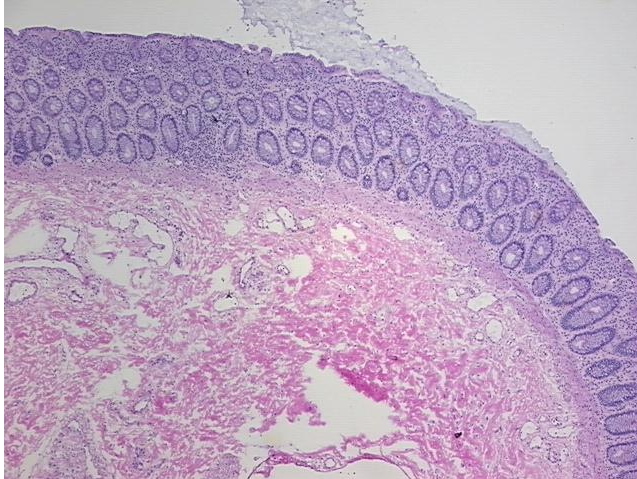


[View online »](#)

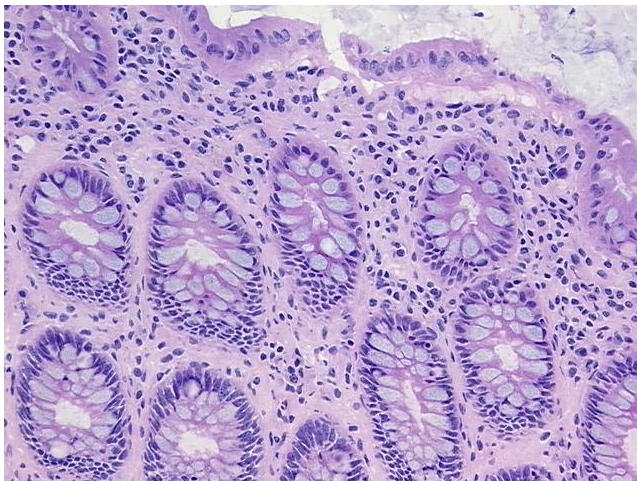
Storage: Store frozen tissue sections at -80°C.

Stability: All frozen tissue sections are stable for 1 year from date of purchase if stored at -80°C without repeated freeze/thaws.

Product images:



4x Image



20x Image