

Product datasheet for **CS504834**

Frozen Tissue Sections, Ear

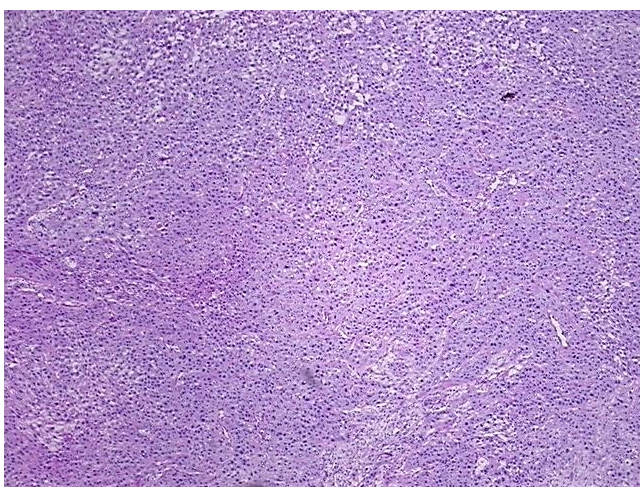
Product data:

Product Type:	Frozen Sections
Disease State:	Cancer
Diagnosis Category:	Skin Cancer
Tissue:	Ear
Frozen Sample ID:	FR00017711
Case ID:	CI0000005177
Tissue of Origin:	Ear
Site of Finding:	Neck
Appearance:	T
Sample Diagnosis (from Pathology Verification):	Carcinoma of skin, squamous cell, metastatic
Normal:	0%
Lesional:	0%
Tumor:	85%
Tumor Hypo/Acellular Stroma:	10%
Tumor Hypercellular Stroma:	5%
Necrosis:	0%
CASE Diagnosis (from medical center path report):	Carcinoma of skin, squamous cell, metastatic
Age:	63
Gender:	Male
Race:	White or Caucasian
Tumor Grade:	AJCC G2: Moderately differentiated

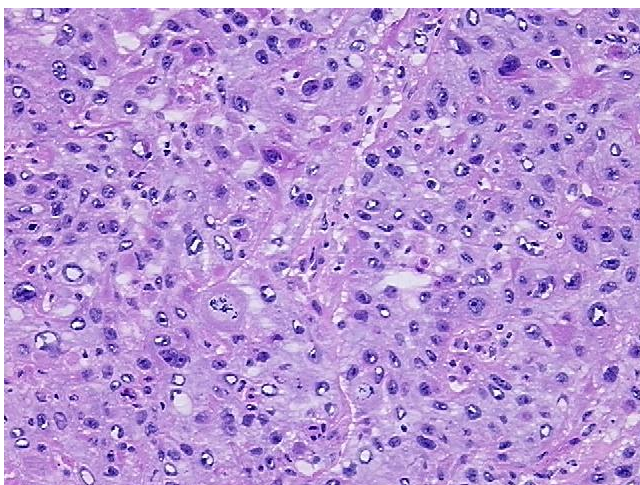


[View online »](#)

Minimum Stage Grouping:	IV
T (Extent of Primary Tumor):	TX
N (Lymph node metastasis):	N0
M (Distant metastasis):	M1
Storage:	Store frozen tissue sections at -80°C.
Stability:	All frozen tissue sections are stable for 1 year from date of purchase if stored at -80°C without repeated freeze/thaws.

Product images:

4x Image



20x Image