

Product datasheet for CS504754

Frozen Tissue Sections, Lung

Product data:

Product Type:	Frozen Sections
Disease State:	Other Disease
Diagnosis Category:	Chronic Obstructive Pulmonary Disease (COPD)
Tissue:	Lung
Frozen Sample ID:	FR000178FF
Case ID:	CI0000005157
Tissue of Origin:	Lung
Site of Finding:	Lung
Appearance:	L
Sample Diagnosis (from Pathology Verification):	Emphysema
Normal:	80%
Lesional:	20%
Tumor:	0%
Tumor Hypo/Acellular Stroma:	0%
Tumor Hypercellular Stroma:	0%
Necrosis:	0%
Pathology Verification notes from H&E review:	Lesion (20%): Emphysema 100%; Non Tumor Structures: 70% Alveoli, 20% Bronchioles, 10% Fibrovascular septa



CASE Diagnosis (from medical center path report): Carcinoma of lung, squamous cell

Age: 49

Gender: Male

Race: White or Caucasian

Tumor Grade: AJCC G2: Moderately differentiated

Minimum Stage Grouping: IIA

T (Extent of Primary Tumor): T1

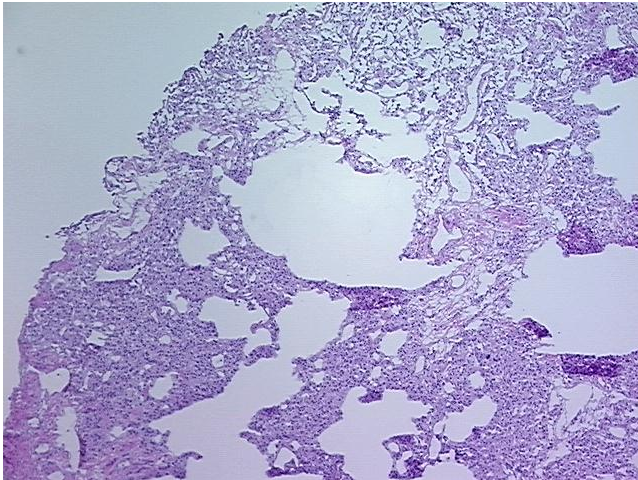
N (Lymph node metastasis): N1

M (Distant metastasis): MX

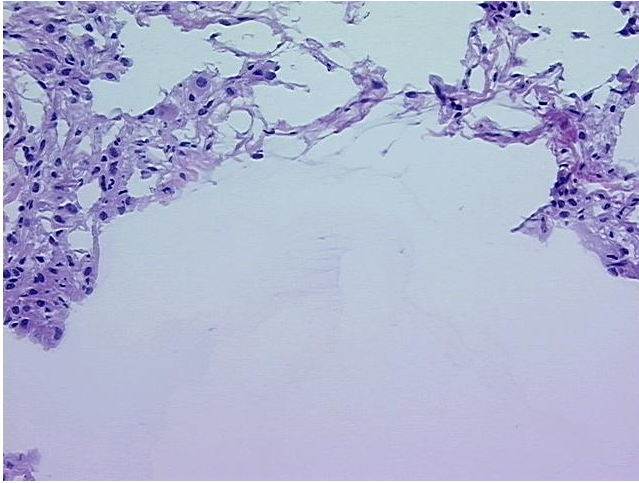
Storage: Store frozen tissue sections at -80°C .

Stability: All frozen tissue sections are stable for 1 year from date of purchase if stored at -80°C without repeated freeze/thaws.

Product images:



4x Image



20x Image