

Product datasheet for CS504730

Frozen Tissue Sections, Breast

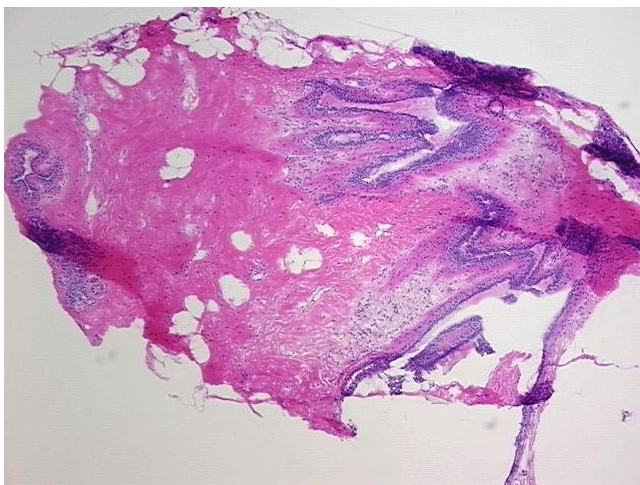
Product data:

Product Type:	Frozen Sections
Disease State:	Normal
Diagnosis Category:	Normal
Tissue:	Breast
Frozen Sample ID:	FR000176D8
Case ID:	CI0000005156
Tissue of Origin:	Breast
Site of Finding:	Breast
Appearance:	R
Sample Diagnosis (from Pathology Verification):	Within normal limits
Normal:	100%
Lesional:	0%
Tumor:	0%
Tumor Hypo/Acellular Stroma:	0%
Tumor Hypercellular Stroma:	0%
Necrosis:	0%
Pathology Verification notes from H&E review:	25% glandular epithelium, 60% fibrous stroma, 15% adipose tissue
CASE Diagnosis (from medical center path report):	Carcinoma in situ of breast, ductal
Age:	53
Gender:	Female
Race:	Black or African American

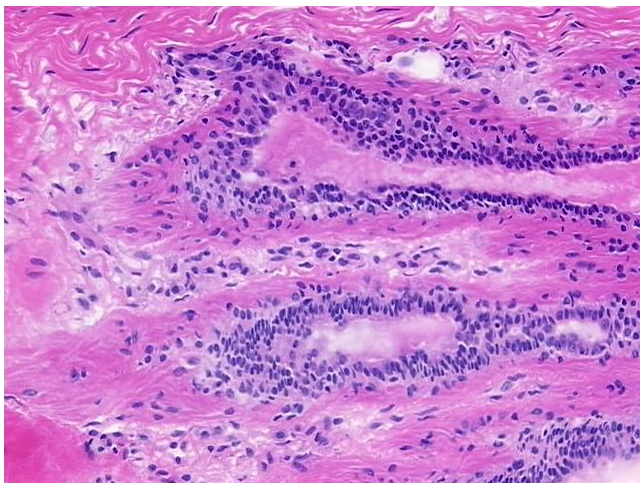


[View online »](#)

Tumor Grade:	DCIS: High grade
T (Extent of Primary Tumor):	Tis
N (Lymph node metastasis):	NX
M (Distant metastasis):	MX
Storage:	Store frozen tissue sections at -80°C.
Stability:	All frozen tissue sections are stable for 1 year from date of purchase if stored at -80°C without repeated freeze/thaws.

Product images:

4x Image



20x Image