

Product datasheet for **CS504701**

Frozen Tissue Sections, Lung

Product data:

Product Type:	Frozen Sections
Disease State:	Other Disease
Diagnosis Category:	Foreign Body Reaction
Tissue:	Lung
Frozen Sample ID:	FR000175BA
Case ID:	CI0000005144
Tissue of Origin:	Lung
Site of Finding:	Lung
Appearance:	L
Sample Diagnosis (from Pathology Verification):	Foreign body reaction
Normal:	10%
Lesional:	65%
Tumor:	0%
Tumor Hypo/Acellular Stroma:	0%
Tumor Hypercellular Stroma:	0%
Necrosis:	25%
Pathology Verification notes from H&E review:	marked fibrosis and chronic inflammation with foreign body giant cell reaction adjacent to the necrotic area; no viable tumor present
CASE Diagnosis (from medical center path report):	Emphysema, centrilobular
Age:	51
Gender:	Male
Race:	White or Caucasian

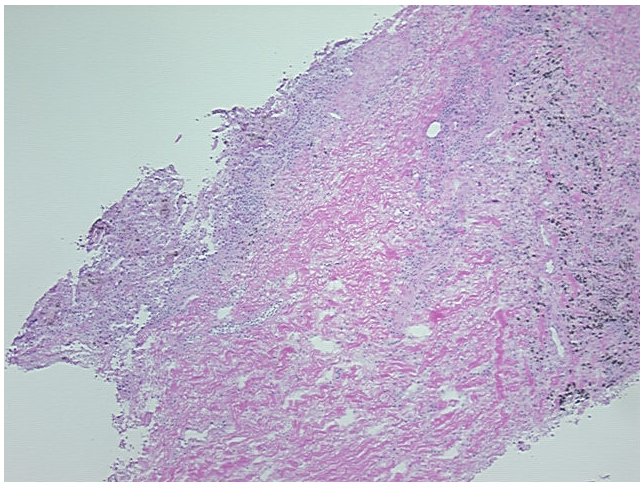


[View online »](#)

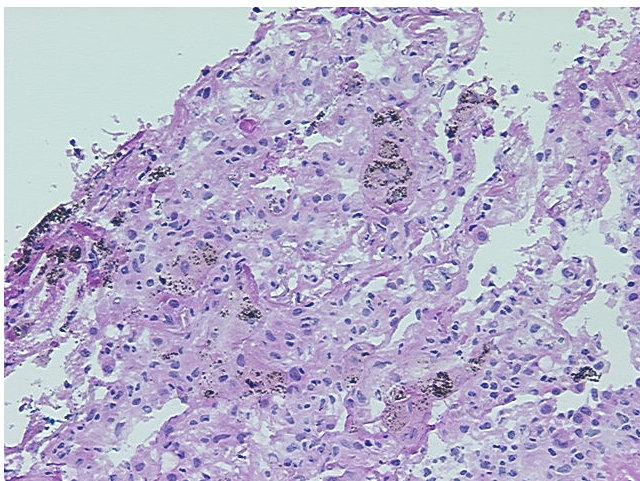
Storage: Store frozen tissue sections at -80°C.

Stability: All frozen tissue sections are stable for 1 year from date of purchase if stored at -80°C without repeated freeze/thaws.

Product images:



4x Image



20x Image