

## Product datasheet for **CS504414**

### Frozen Tissue Sections, Lung

#### Product data:

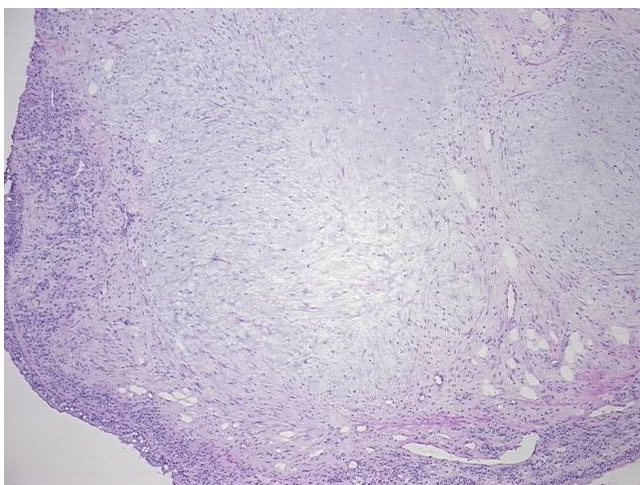
Product Type:	Frozen Sections
Disease State:	Other Disease
Diagnosis Category:	Hamartoma
Tissue:	Lung
Frozen Sample ID:	FR000171B7
Case ID:	CI0000005081
Tissue of Origin:	Lung
Site of Finding:	Lung
Appearance:	L
Sample Diagnosis (from Pathology Verification):	Hamartoma of lung
Normal:	25%
Lesional:	75%
Tumor:	0%
Tumor Hypo/Acellular Stroma:	0%
Tumor Hypercellular Stroma:	0%
Necrosis:	0%
CASE Diagnosis (from medical center path report):	Hamartoma of lung
Age:	60
Gender:	Female
Race:	Not reported
Storage:	Store frozen tissue sections at -80°C.



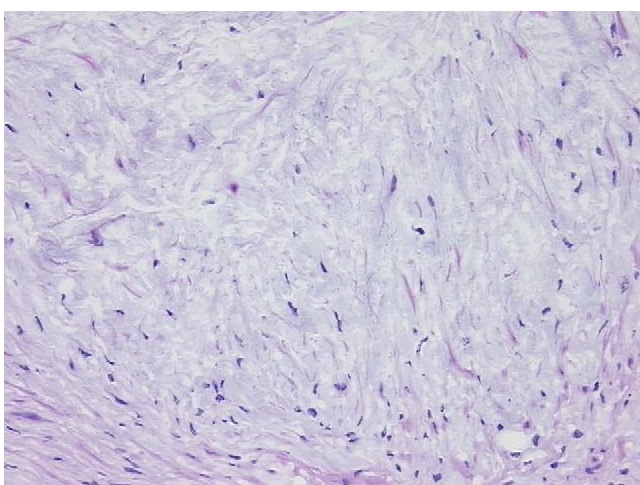
[View online »](#)

**Stability:** All frozen tissue sections are stable for 1 year from date of purchase if stored at -80°C without repeated freeze/thaws.

**Product images:**



4x Image



20x Image