

## Product datasheet for **CS504194**

### Frozen Tissue Sections, Lung

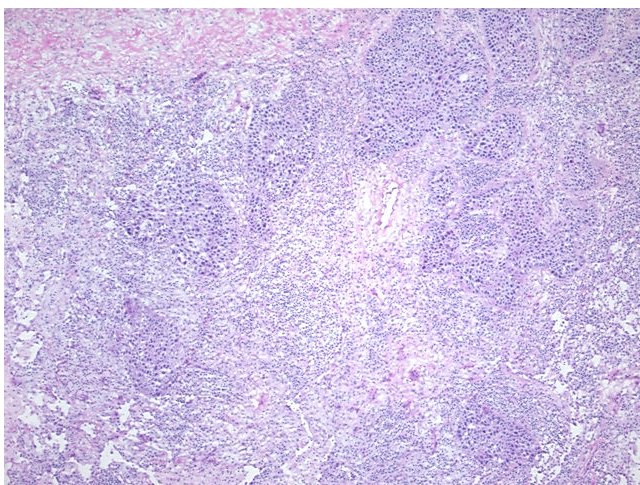
#### Product data:

Product Type:	Frozen Sections
Disease State:	Cancer
Diagnosis Category:	Lung Cancer
Tissue:	Lung
Frozen Sample ID:	FR00016B87
Case ID:	CI0000005028
Tissue of Origin:	Lung
Site of Finding:	Lung
Appearance:	T
Sample Diagnosis (from Pathology Verification):	Carcinoma of lung, squamous cell
Normal:	0%
Lesional:	50%
Tumor:	25%
Tumor Hypo/Acellular Stroma:	0%
Tumor Hypercellular Stroma:	25%
Necrosis:	0%
Pathology Verification notes from H&E review:	Lesion (50%): Emphysema, centrilobular 100%
CASE Diagnosis (from medical center path report):	Carcinoma of lung, squamous cell
Age:	69
Gender:	Female
Race:	White or Caucasian

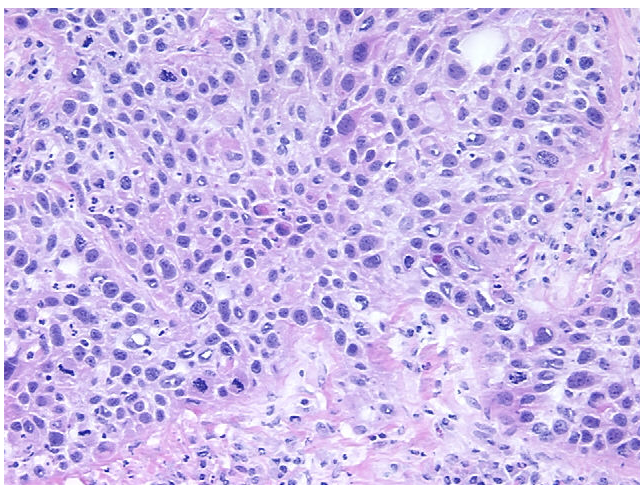


[View online »](#)

<b>Tumor Grade:</b>	AJCC G3: Poorly differentiated
<b>Minimum Stage Grouping:</b>	IIIA
<b>T (Extent of Primary Tumor):</b>	T3
<b>N (Lymph node metastasis):</b>	N1
<b>M (Distant metastasis):</b>	MX
<b>Diagnostic Test Results:</b>	Cytokeratin (Pan) ~ Keratin, Pan ! by IHC,Positive; CD68 ~ KP1 ! by IHC,Positive
<b>Storage:</b>	Store frozen tissue sections at -80°C.
<b>Stability:</b>	All frozen tissue sections are stable for 1 year from date of purchase if stored at -80°C without repeated freeze/thaws.

**Product images:**

4x Image



20x Image