

## Product datasheet for CS503981

### Frozen Tissue Sections, Kidney

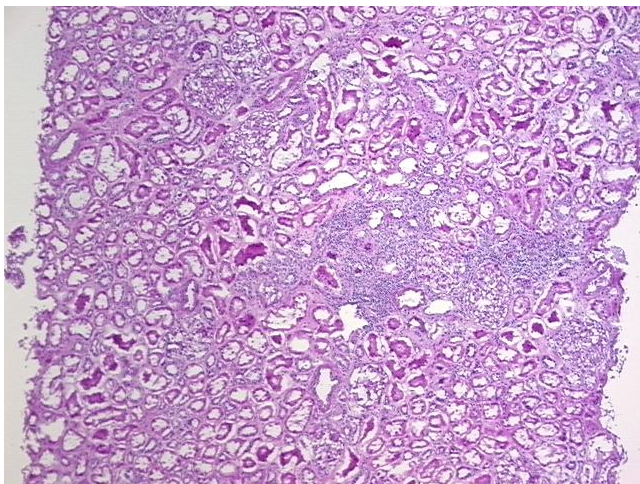
#### Product data:

|   |  |
|---|--|
| Product Type:                                     | Frozen Sections                        |
| Disease State:                                    | Other Disease                          |
| Diagnosis Category:                               | Nephritis                              |
| Tissue:   | Kidney                                 |
| Frozen Sample ID:                                 | FR000081F4                             |
| Case ID:  | CI0000000496                           |
| Tissue of Origin:                                 | Kidney                                 |
| Site of Finding:                                  | Kidney                                 |
| Appearance:                                       | L                                      |
| Sample Diagnosis (from Pathology Verification):   | Nephritis, tubulointerstitial, chronic |
| Normal:   | 0%                                     |
| Lesional:   | 100%                                   |
| Tumor:  | 0%                                     |
| Tumor Hypo/Acellular Stroma:                      | 0%                                     |
| Tumor Hypercellular Stroma:                       | 0%                                     |
| Necrosis:   | 0%                                     |
| Pathology Verification notes from H&E review:     | 100% cortex                            |
| CASE Diagnosis (from medical center path report): | Carcinoma of ureter, transitional cell |
| Age:  | 71                                     |
| Gender:   | Male                                   |
| Race:   | Not reported                           |

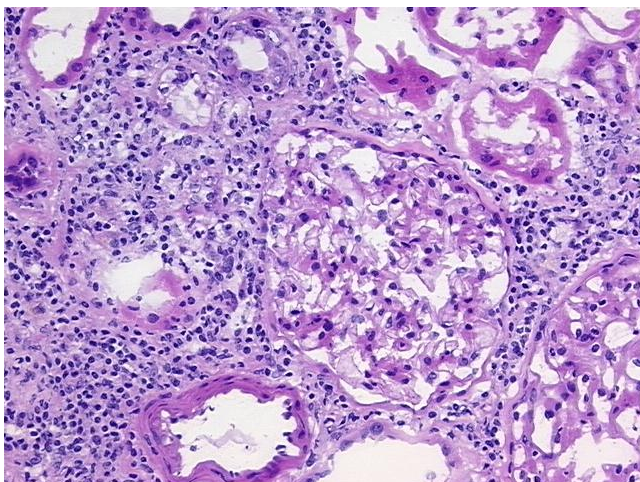


[View online »](#)

|                              |  |
|------------------------------|--|
| Tumor Grade:                 | AJCC G2: Moderately differentiated   |
| Minimum Stage Grouping:      | I  |
| T (Extent of Primary Tumor): | T1   |
| N (Lymph node metastasis):   | NX   |
| M (Distant metastasis):      | MX   |
| Storage:                     | Store frozen tissue sections at -80°C.   |
| Stability:                   | All frozen tissue sections are stable for 1 year from date of purchase if stored at -80°C without repeated freeze/thaws. |

**Product images:**

4x Image



20x Image