

## Product datasheet for **CS503889**

### Frozen Tissue Sections, Endometrium

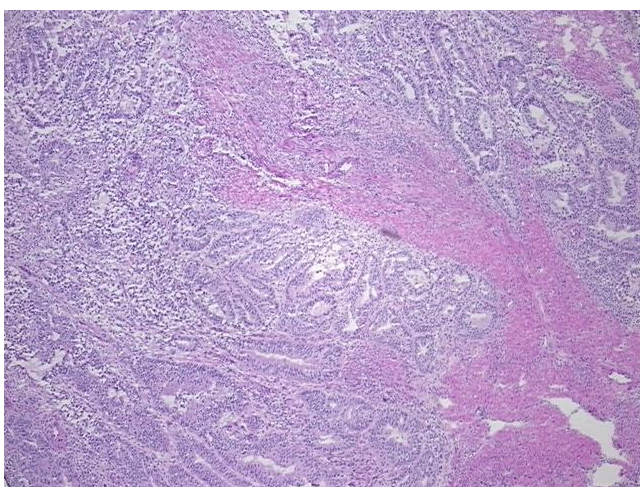
#### Product data:

Product Type:	Frozen Sections
Disease State:	Cancer
Diagnosis Category:	Endometrial Cancer
Tissue:	Endometrium
Frozen Sample ID:	FR00007FE6
Case ID:	CI0000000486
Tissue of Origin:	Endometrium
Site of Finding:	Uterus
Appearance:	T
Sample Diagnosis (from Pathology Verification):	Adenocarcinoma of endometrium, endometrioid, squamous features
Normal:	0%
Lesional:	0%
Tumor:	80%
Tumor Hypo/Acellular Stroma:	10%
Tumor Hypercellular Stroma:	10%
Necrosis:	0%
CASE Diagnosis (from medical center path report):	Adenocarcinoma of endometrium, endometrioid, squamous features, focal
Age:	39
Gender:	Female
Race:	Not reported
Tumor Grade:	FIGO G1: Well differentiated

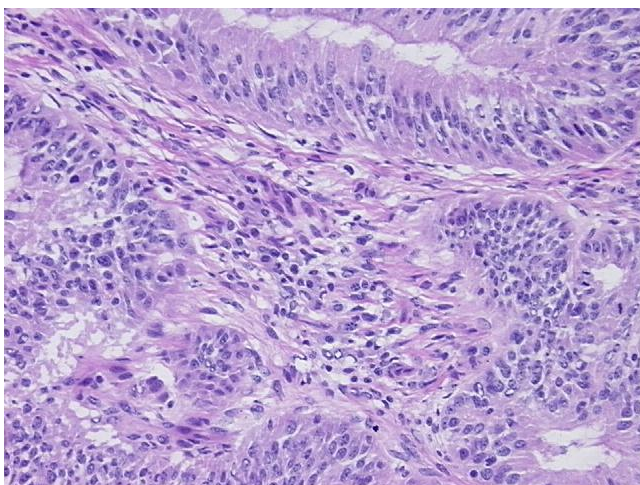


[View online »](#)

Minimum Stage Grouping:	IB
T (Extent of Primary Tumor):	T1b
N (Lymph node metastasis):	NX
M (Distant metastasis):	MX
Storage:	Store frozen tissue sections at -80°C.
Stability:	All frozen tissue sections are stable for 1 year from date of purchase if stored at -80°C without repeated freeze/thaws.

**Product images:**

4x Image



20x Image