

Product datasheet for **CS503717**

Frozen Tissue Sections, Parotid gland

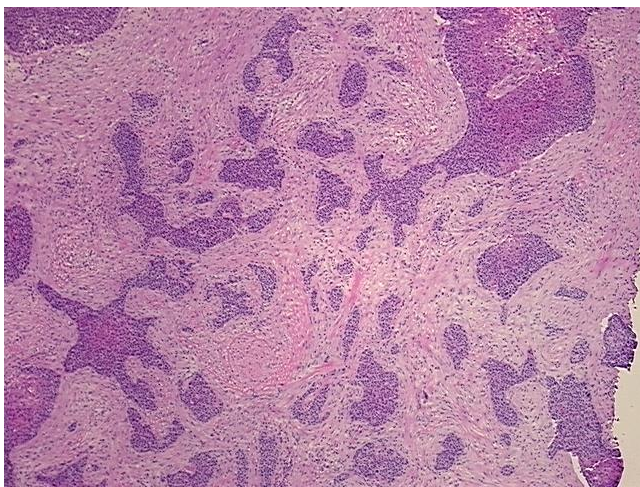
Product data:

Product Type:	Frozen Sections
Disease State:	Cancer
Diagnosis Category:	Head and Neck Cancer
Tissue:	Salivary gland
Frozen Sample ID:	FR00007DC4
Case ID:	CI0000000471
Tissue of Origin:	Parotid gland
Site of Finding:	Parotid gland
Appearance:	T
Sample Diagnosis (from Pathology Verification):	Carcinoma of parotid gland, squamous cell
Normal:	0%
Lesional:	0%
Tumor:	45%
Tumor Hypo/Acellular Stroma:	0%
Tumor Hypercellular Stroma:	50%
Necrosis:	5%
Pathology Verification notes from H&E review:	Tumor: impossible to distinguish between primary vs invasion/metastasis (metastasis/invasion into the parotid gland is more common than primary squamous cell carcinoma of the parotid gland)
CASE Diagnosis (from medical center path report):	Carcinoma of parotid gland, squamous cell
Age:	81
Gender:	Male

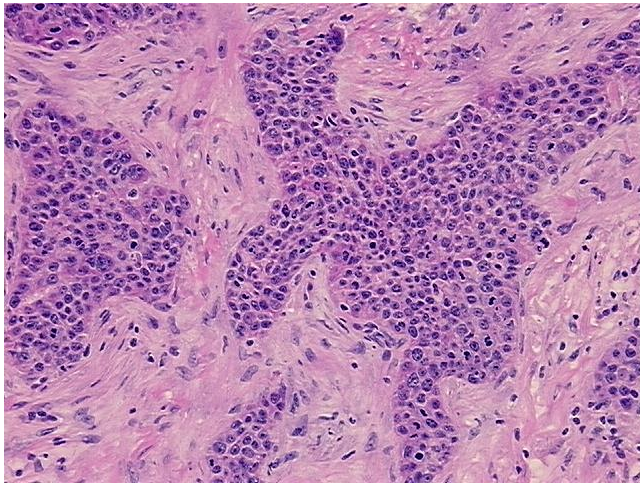


[View online »](#)

Race:	Not reported
Tumor Grade:	AJCC G3: Poorly differentiated
Minimum Stage Grouping:	IVA
T (Extent of Primary Tumor):	T4a
N (Lymph node metastasis):	NX
M (Distant metastasis):	MX
Storage:	Store frozen tissue sections at -80°C.
Stability:	All frozen tissue sections are stable for 1 year from date of purchase if stored at -80°C without repeated freeze/thaws.

Product images:

4x Image



20x Image