

## Product datasheet for **CS503671**

### Frozen Tissue Sections, Ileum

#### Product data:

Product Type:	Frozen Sections
Disease State:	Normal
Diagnosis Category:	Normal
Tissue:	Small intestine
Frozen Sample ID:	FR00007CF4
Case ID:	CI0000000460
Tissue of Origin:	Ileum
Site of Finding:	Ileum
Appearance:	R
Sample Diagnosis (from Pathology Verification):	Within normal limits
Normal:	100%
Lesional:	0%
Tumor:	0%
Tumor Hypo/Acellular Stroma:	0%
Tumor Hypercellular Stroma:	0%
Necrosis:	0%
Pathology Verification notes from H&E review:	30% mucosa, 45% submucosa, 25% muscles.
CASE Diagnosis (from medical center path report):	Crohns disease
Age:	60
Gender:	Female
Race:	Not reported

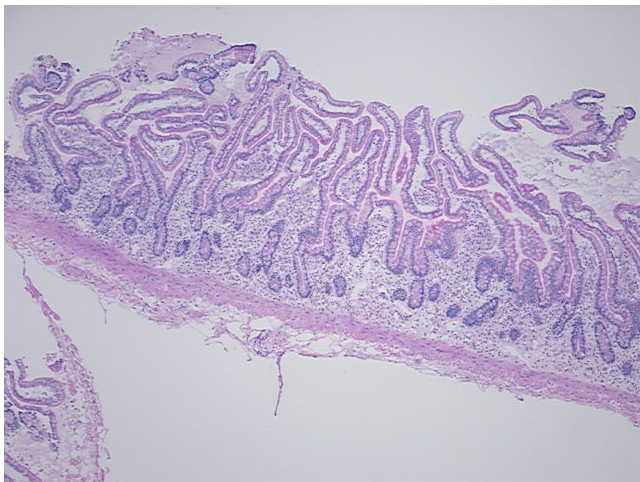


[View online »](#)

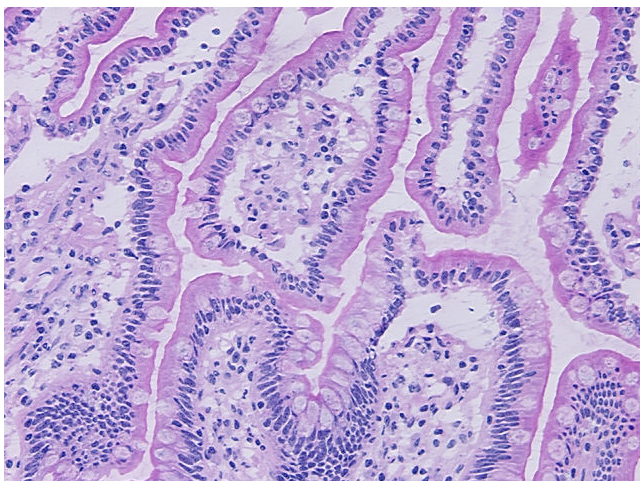
**Storage:** Store frozen tissue sections at  $-80^{\circ}\text{C}$ .

**Stability:** All frozen tissue sections are stable for 1 year from date of purchase if stored at  $-80^{\circ}\text{C}$  without repeated freeze/thaws.

**Product images:**



4x Image



20x Image