

## Product datasheet for **CS503368**

### Frozen Tissue Sections, Ovary: bilateral

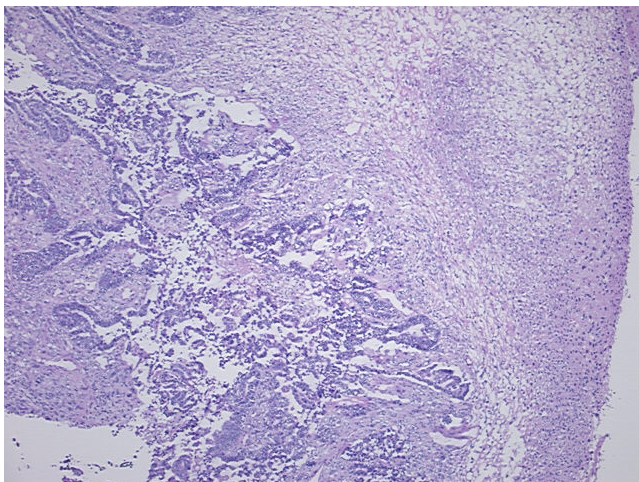
#### Product data:

Product Type:	Frozen Sections
Disease State:	Other Disease
Diagnosis Category:	Benign Tumors
Tissue:	Ovary
Frozen Sample ID:	FR000074E5
Case ID:	CI0000000412
Tissue of Origin:	Ovary: bilateral
Site of Finding:	Ovary
Appearance:	T
Sample Diagnosis (from Pathology Verification):	Tumor of ovary, mixed Mullerian
Normal:	0%
Lesional:	0%
Tumor:	90%
Tumor Hypo/Acellular Stroma:	0%
Tumor Hypercellular Stroma:	0%
Necrosis:	10%
Pathology Verification notes from H&E review:	30% epithelial component, 60% sarcomatous component; Malignant mixed Mullerian tumor or adenosarcoma
CASE Diagnosis (from medical center path report):	Tumor of ovary, mixed Mullerian
Age:	61
Gender:	Female
Race:	Not reported

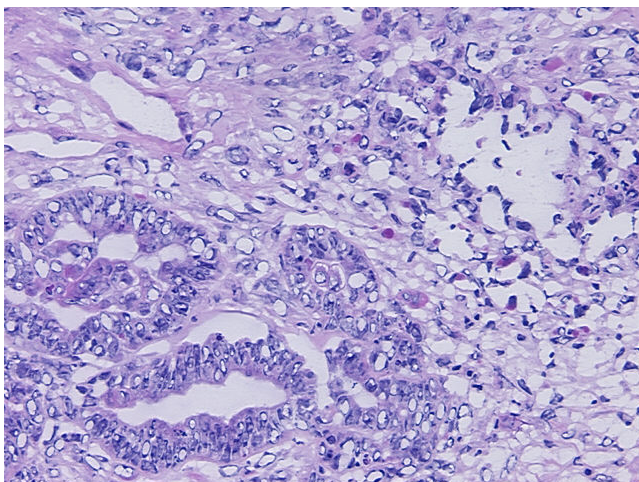


[View online »](#)

Tumor Grade:	FIGO G3: Poorly differentiated
Minimum Stage Grouping:	IIIB
T (Extent of Primary Tumor):	T3b
N (Lymph node metastasis):	NX
M (Distant metastasis):	MX
Storage:	Store frozen tissue sections at -80°C.
Stability:	All frozen tissue sections are stable for 1 year from date of purchase if stored at -80°C without repeated freeze/thaws.

**Product images:**

4x Image



20x Image