

Product datasheet for **CS503367**

Frozen Tissue Sections, Ovary: bilateral

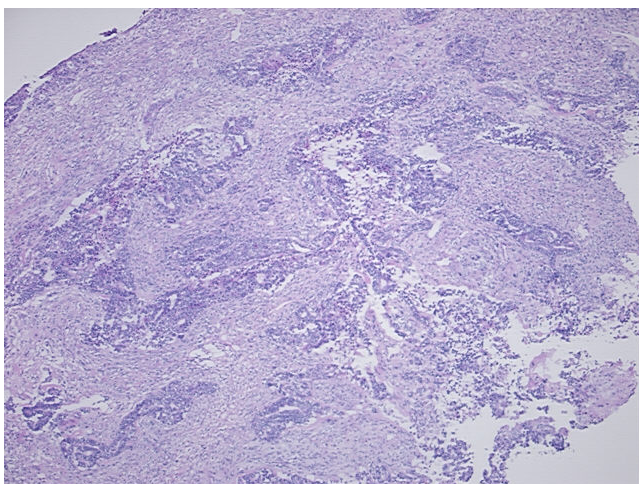
Product data:

| | |
|---|--|
| Product Type: | Frozen Sections |
| Disease State: | Other Disease |
| Diagnosis Category: | Benign Tumors |
| Tissue: | Ovary |
| Frozen Sample ID: | FR000074E4 |
| Case ID: | CI0000000412 |
| Tissue of Origin: | Ovary: bilateral |
| Site of Finding: | Ovary |
| Appearance: | T |
| Sample Diagnosis (from Pathology Verification): | Tumor of ovary, mixed Mullerian |
| Normal: | 0% |
| Lesional: | 0% |
| Tumor: | 95% |
| Tumor Hypo/Acellular Stroma: | 0% |
| Tumor Hypercellular Stroma: | 0% |
| Necrosis: | 5% |
| Pathology Verification notes from H&E review: | 35% epithelial component, 60% sarcomatous component; Malignant mixed Mullerian tumor or adenosarcoma |
| CASE Diagnosis (from medical center path report): | Tumor of ovary, mixed Mullerian |
| Age: | 61 |
| Gender: | Female |
| Race: | Not reported |

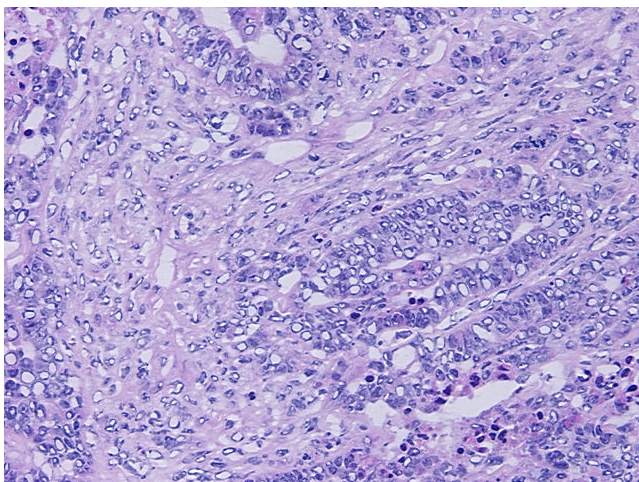


[View online »](#)

| | |
|------------------------------|--|
| Tumor Grade: | FIGO G3: Poorly differentiated |
| Minimum Stage Grouping: | IIIB |
| T (Extent of Primary Tumor): | T3b |
| N (Lymph node metastasis): | NX |
| M (Distant metastasis): | MX |
| Storage: | Store frozen tissue sections at -80°C. |
| Stability: | All frozen tissue sections are stable for 1 year from date of purchase if stored at -80°C without repeated freeze/thaws. |

Product images:

4x Image



20x Image