

Product datasheet for CS503251

Frozen Tissue Sections, Lung: left upper lobe

Product data:

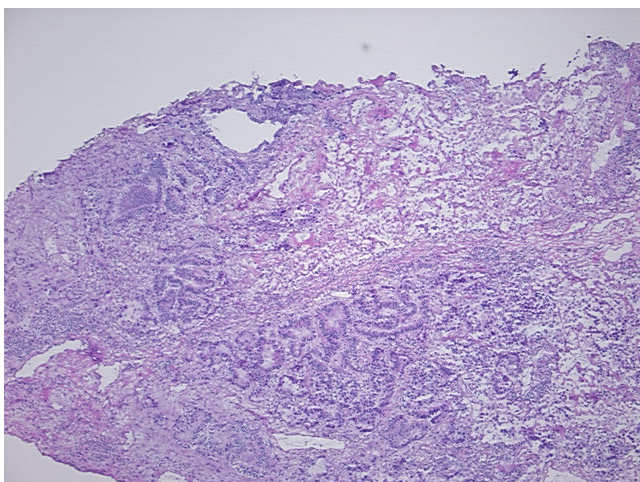
Product Type:	Frozen Sections
Disease State:	Cancer
Diagnosis Category:	Lung Cancer
Tissue:	Lung
Frozen Sample ID:	FR00007305
Case ID:	CI0000000396
Tissue of Origin:	Lung: left upper lobe
Site of Finding:	Lung: left upper lobe
Appearance:	T
Sample Diagnosis (from Pathology Verification):	Adenocarcinoma of lung, bronchioloalveolar
Normal:	70%
Lesional:	0%
Tumor:	25%
Tumor Hypo/Acellular Stroma:	0%
Tumor Hypercellular Stroma:	5%
Necrosis:	0%
Pathology Verification notes from H&E review:	Tumor: some features of bronchioloalveolar type; Other Features/Comments: Normal: 70% alveoli with interstitial fibrosis
CASE Diagnosis (from medical center path report):	Adenocarcinoma of lung
Age:	59
Gender:	Female
Race:	Not reported



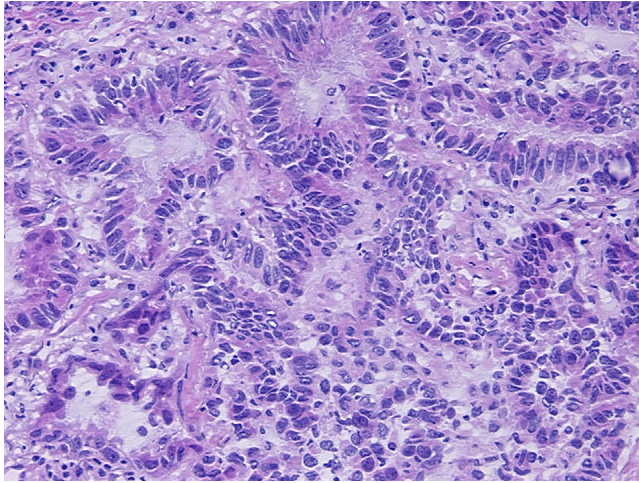
[View online »](#)

Tumor Grade:	AJCC G2: Moderately differentiated
Minimum Stage Grouping:	IA
T (Extent of Primary Tumor):	T1
N (Lymph node metastasis):	NX
M (Distant metastasis):	MX
Diagnostic Test Results:	Vimentin ~ VIM ! by IHC,Negative; Cytokeratin 7 ~ CK7 ! by IHC,Positive; Cytokeratin 20 ~ CK20 ! by IHC,Negative; CD66e ~ CEACAM5 ! by IHC,Positive
Storage:	Store frozen tissue sections at -80°C.
Stability:	All frozen tissue sections are stable for 1 year from date of purchase if stored at -80°C without repeated freeze/thaws.

Product images:



4x Image



20x Image