

## Product datasheet for **CS503129**

### Frozen Tissue Sections, Breast

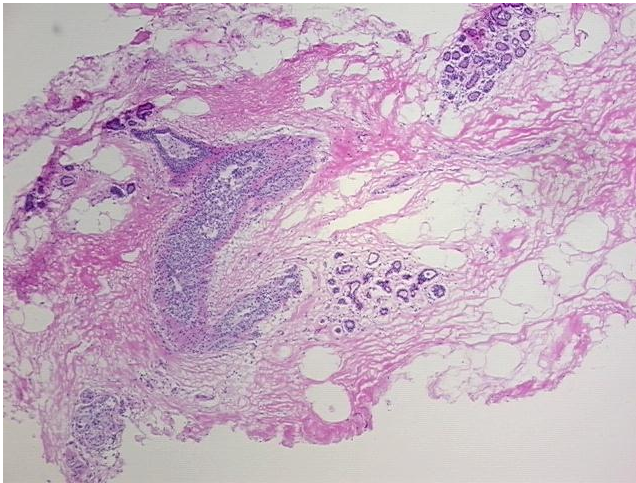
#### Product data:

Product Type:	Frozen Sections
Disease State:	Other Disease
Diagnosis Category:	Hyperplasia
Tissue:	Breast
Frozen Sample ID:	FR000071D7
Case ID:	CI0000000384
Tissue of Origin:	Breast
Site of Finding:	Breast
Appearance:	L
Sample Diagnosis (from Pathology Verification):	Ductal hyperplasia of breast, atypical
Normal:	80%
Lesional:	20%
Tumor:	0%
Tumor Hypo/Acellular Stroma:	0%
Tumor Hypercellular Stroma:	0%
Necrosis:	0%
Pathology Verification notes from H&E review:	normal: 35% glandular epithelium, 50% fibrous stroma, 15% adipose tissue
CASE Diagnosis (from medical center path report):	Carcinoma in situ of breast, ductal
Age:	71
Gender:	Female
Race:	Not reported

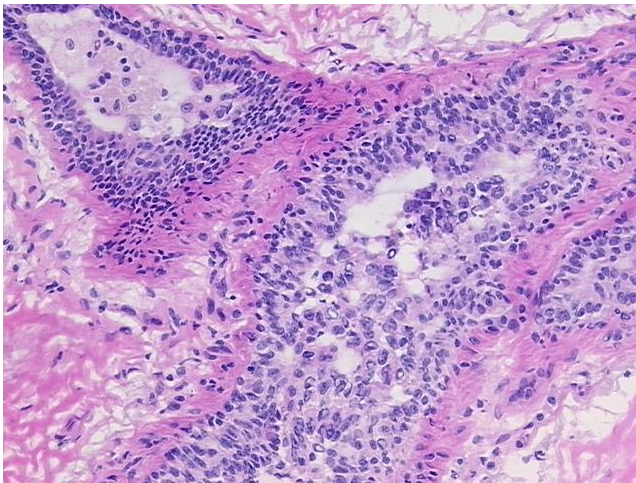


[View online »](#)

<b>Tumor Grade:</b>	DCIS: Intermediate grade
<b>T (Extent of Primary Tumor):</b>	Tis
<b>N (Lymph node metastasis):</b>	N0
<b>M (Distant metastasis):</b>	MX
<b>Storage:</b>	Store frozen tissue sections at -80°C.
<b>Stability:</b>	All frozen tissue sections are stable for 1 year from date of purchase if stored at -80°C without repeated freeze/thaws.

**Product images:**


4x Image



20x Image