

Product datasheet for **CS502955**

Frozen Tissue Sections, Pancreas

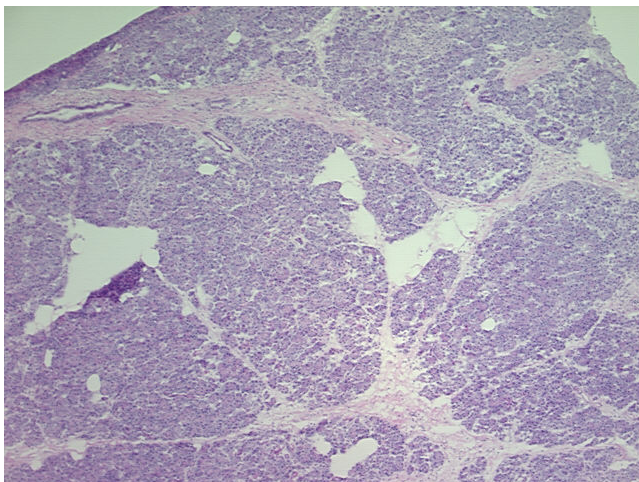
Product data:

| | |
|---|---|
| Product Type: | Frozen Sections |
| Disease State: | Other Disease |
| Diagnosis Category: | Pancreatitis |
| Tissue: | Pancreas |
| Frozen Sample ID: | FR00006B10 |
| Case ID: | CI0000000364 |
| Tissue of Origin: | Pancreas |
| Site of Finding: | Pancreas |
| Appearance: | L |
| Sample Diagnosis (from Pathology Verification): | Pancreatitis, chronic |
| Normal: | 0% |
| Lesional: | 100% |
| Tumor: | 0% |
| Tumor Hypo/Acellular Stroma: | 0% |
| Tumor Hypercellular Stroma: | 0% |
| Necrosis: | 0% |
| Pathology Verification notes from H&E review: | 94% Acini and ducts, 1% Islets, 5% Fibrous stroma with chronic inflammation |
| CASE Diagnosis (from medical center path report): | Adenocarcinoma of pancreas, ductal |
| Age: | 71 |
| Gender: | Male |
| Race: | Not reported |

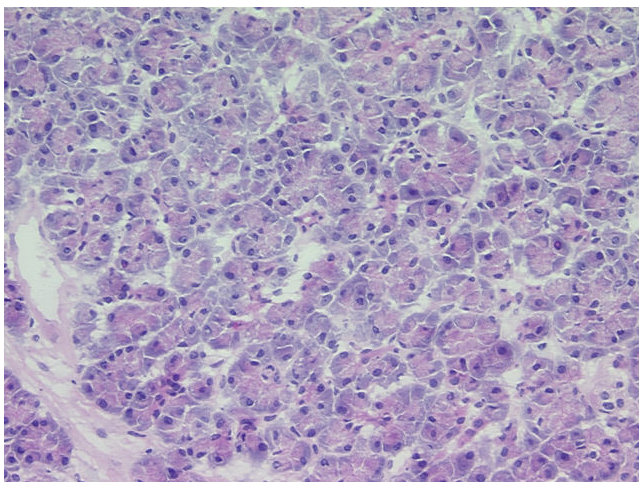


[View online »](#)

| | |
|------------------------------|--|
| Tumor Grade: | AJCC G2: Moderately differentiated |
| Minimum Stage Grouping: | IIB |
| T (Extent of Primary Tumor): | T3 |
| N (Lymph node metastasis): | N1 |
| M (Distant metastasis): | MX |
| Storage: | Store frozen tissue sections at -80°C. |
| Stability: | All frozen tissue sections are stable for 1 year from date of purchase if stored at -80°C without repeated freeze/thaws. |

Product images:

4x Image



20x Image