

## Product datasheet for **CS502944**

### Frozen Tissue Sections, Myometrium

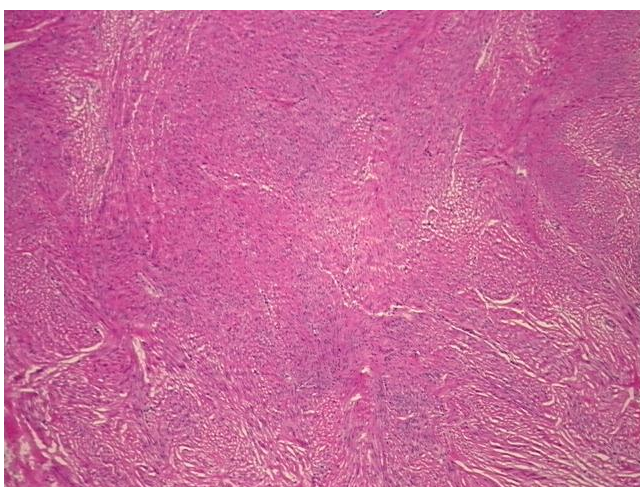
#### Product data:

|   |                         |
|---|-------------------------|
| Product Type:                                     | Frozen Sections         |
| Disease State:                                    | Other Disease           |
| Diagnosis Category:                               | Uterine Fibroids        |
| Tissue:   | Myometrium              |
| Frozen Sample ID:                                 | FR00006AC8              |
| Case ID:  | CI0000000362            |
| Tissue of Origin:                                 | Myometrium              |
| Site of Finding:                                  | Myometrium              |
| Appearance:                                       | T                       |
| Sample Diagnosis (from Pathology Verification):   | Leiomyoma of myometrium |
| Normal:   | 5%                      |
| Lesional:   | 0%                      |
| Tumor:  | 95%                     |
| Tumor Hypo/Acellular Stroma:                      | 0%                      |
| Tumor Hypercellular Stroma:                       | 0%                      |
| Necrosis:   | 0%                      |
| CASE Diagnosis (from medical center path report): | Leiomyoma of myometrium |
| Age:  | 66                      |
| Gender:   | Female                  |
| Race:   | Not reported            |
| Tumor Grade:                                      | Not Reported            |

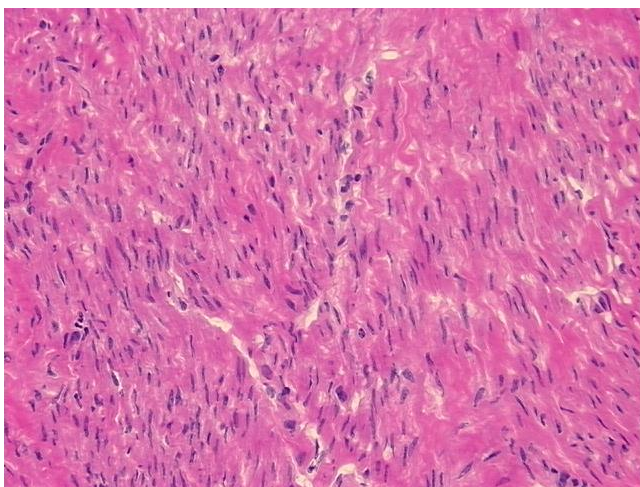


[View online »](#)

|                              |  |
|------------------------------|--|
| Minimum Stage Grouping:      | Not Reported   |
| T (Extent of Primary Tumor): | Not Reported   |
| N (Lymph node metastasis):   | Not Reported   |
| M (Distant metastasis):      | Not Reported   |
| Storage:                     | Store frozen tissue sections at -80°C.   |
| Stability:                   | All frozen tissue sections are stable for 1 year from date of purchase if stored at -80°C without repeated freeze/thaws. |

**Product images:**

4x Image



20x Image