

Product datasheet for **CS502776**

Frozen Tissue Sections, Lung

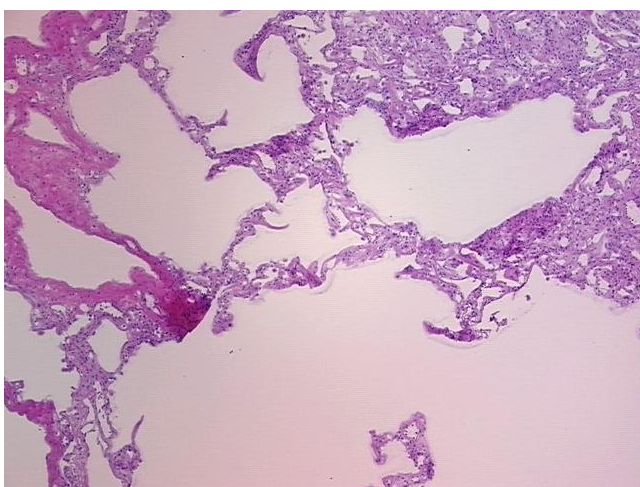
Product data:

Product Type:	Frozen Sections
Disease State:	Other Disease
Diagnosis Category:	Chronic Obstructive Pulmonary Disease (COPD)
Tissue:	Lung
Frozen Sample ID:	FR000069F2
Case ID:	CI0000000342
Tissue of Origin:	Lung
Site of Finding:	Lung
Appearance:	L
Sample Diagnosis (from Pathology Verification):	Emphysematous changes
Normal:	45%
Lesional:	55%
Tumor:	0%
Tumor Hypo/Acellular Stroma:	0%
Tumor Hypercellular Stroma:	0%
Necrosis:	0%
CASE Diagnosis (from medical center path report):	Adenocarcinoma of lung, papillary
Age:	66
Gender:	Female
Race:	White or Caucasian
Tumor Grade:	AJCC G2: Moderately differentiated

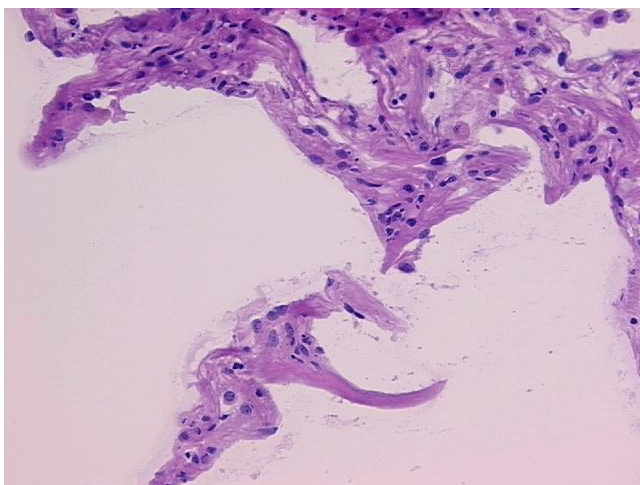


[View online »](#)

Minimum Stage Grouping:	IIIA
T (Extent of Primary Tumor):	T2
N (Lymph node metastasis):	N2
M (Distant metastasis):	M0
Storage:	Store frozen tissue sections at -80°C.
Stability:	All frozen tissue sections are stable for 1 year from date of purchase if stored at -80°C without repeated freeze/thaws.

Product images:

4x Image



20x Image