

Product datasheet for **CS502769**

Frozen Tissue Sections, Lung: right upper lobe

Product data:

Product Type:	Frozen Sections
Disease State:	Cancer
Diagnosis Category:	Lung Cancer
Tissue:	Lung
Frozen Sample ID:	FR000069DE
Case ID:	CI0000000342
Tissue of Origin:	Lung: right upper lobe
Site of Finding:	Lung: right upper lobe
Appearance:	T
Sample Diagnosis (from Pathology Verification):	Adenocarcinoma of lung, papillary
Normal:	0%
Lesional:	0%
Tumor:	30%
Tumor Hypo/Acellular Stroma:	10%
Tumor Hypercellular Stroma:	25%
Necrosis:	35%
CASE Diagnosis (from medical center path report):	Adenocarcinoma of lung, papillary
Age:	66
Gender:	Female
Race:	White or Caucasian
Tumor Grade:	AJCC G2: Moderately differentiated



[View online »](#)

Minimum Stage Grouping: IIIA

T (Extent of Primary Tumor): T2

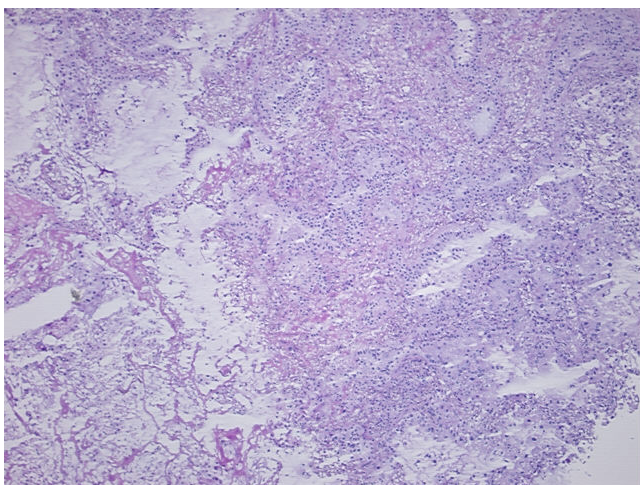
N (Lymph node metastasis): N2

M (Distant metastasis): M0

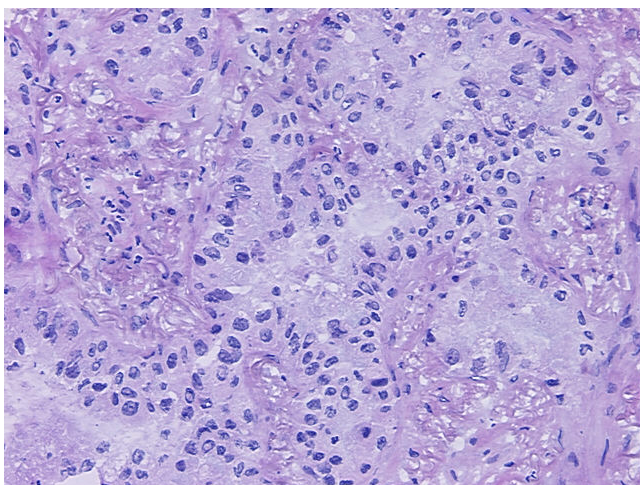
Storage: Store frozen tissue sections at -80°C.

Stability: All frozen tissue sections are stable for 1 year from date of purchase if stored at -80°C without repeated freeze/thaws.

Product images:



4x Image



20x Image