

Product datasheet for CS502728

Frozen Tissue Sections, Lung

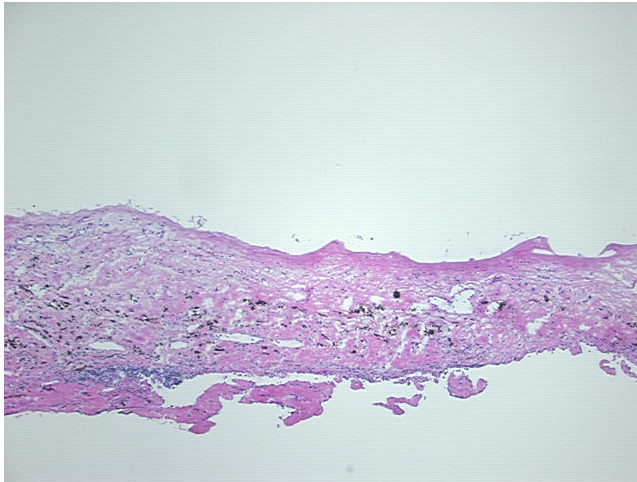
Product data:

| | |
|---|---|
| Product Type: | Frozen Sections |
| Disease State: | Other Disease |
| Diagnosis Category: | Fibrosis |
| Tissue: | Lung |
| Frozen Sample ID: | FR0000695C |
| Case ID: | CI0000000335 |
| Tissue of Origin: | Lung |
| Site of Finding: | Lung |
| Appearance: | L |
| Sample Diagnosis (from Pathology Verification): | Fibrosis |
| Normal: | 95% |
| Lesional: | 5% |
| Tumor: | 0% |
| Tumor Hypo/Acellular Stroma: | 0% |
| Tumor Hypercellular Stroma: | 0% |
| Necrosis: | 0% |
| Pathology Verification notes from H&E review: | 5% Alveoli with interstitial fibrosis, 95% Fibrous pleura |
| CASE Diagnosis (from medical center path report): | Carcinoma of lung, squamous cell |
| Age: | 66 |
| Gender: | Male |
| Race: | Black or African American |

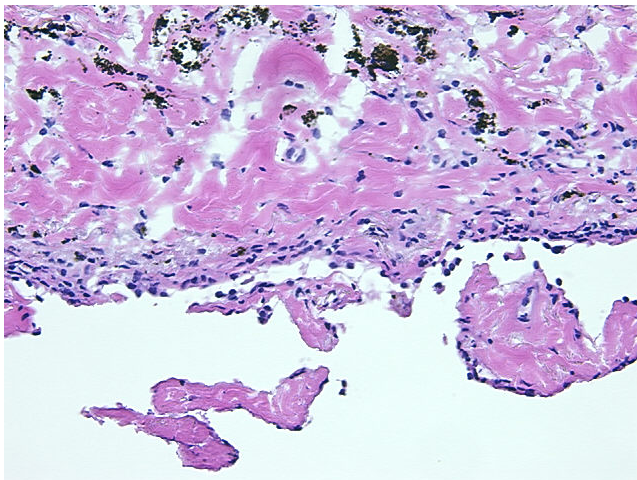


[View online »](#)

| | |
|-------------------------------------|--|
| Tumor Grade: | AJCC G2: Moderately differentiated |
| Minimum Stage Grouping: | IIB |
| T (Extent of Primary Tumor): | T2 |
| N (Lymph node metastasis): | N1 |
| M (Distant metastasis): | MX |
| Storage: | Store frozen tissue sections at -80°C. |
| Stability: | All frozen tissue sections are stable for 1 year from date of purchase if stored at -80°C without repeated freeze/thaws. |

Product images:


4x Image



20x Image