

Product datasheet for **CS502647**

Frozen Tissue Sections, Endometrium

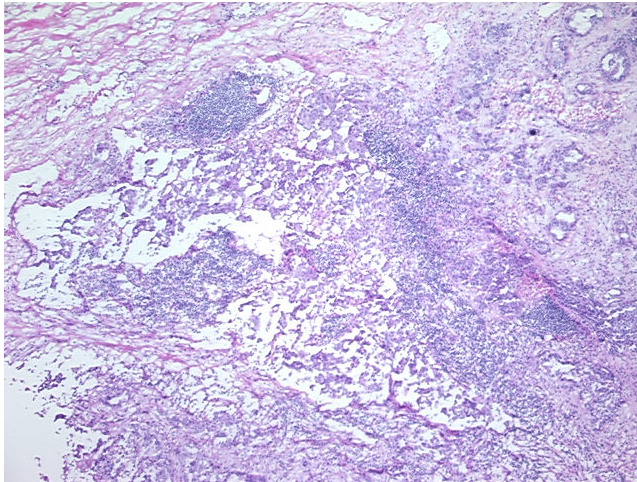
Product data:

Product Type:	Frozen Sections
Disease State:	Cancer
Diagnosis Category:	Endometrial Cancer
Tissue:	Endometrium
Frozen Sample ID:	FR00006819
Case ID:	CI0000000323
Tissue of Origin:	Endometrium
Site of Finding:	Omentum
Appearance:	T
Sample Diagnosis (from Pathology Verification):	Adenocarcinoma of endometrium, serous, metastatic
Normal:	35%
Lesional:	0%
Tumor:	40%
Tumor Hypo/Acellular Stroma:	8%
Tumor Hypercellular Stroma:	15%
Necrosis:	2%
Pathology Verification notes from H&E review:	Metastatic endometrial adenocarcinoma to omentum; normal component consists of fibroadipose tissue of omentum
CASE Diagnosis (from medical center path report):	Adenocarcinoma of endometrium, serous
Age:	69
Gender:	Female
Race:	Black or African American

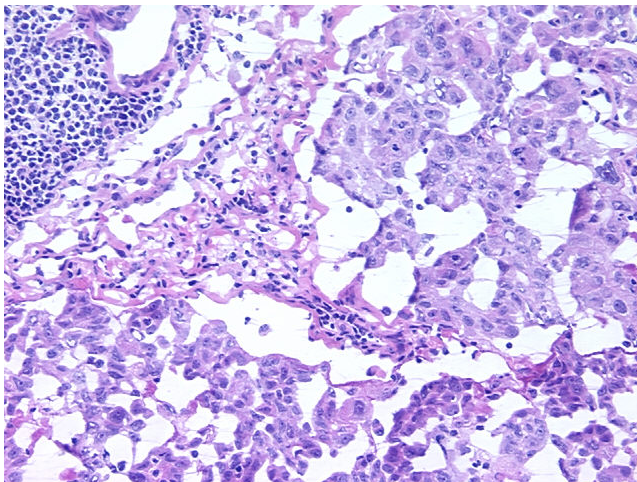


[View online »](#)

Tumor Grade:	FIGO G2: Moderately differentiated
Minimum Stage Grouping:	IIIA
T (Extent of Primary Tumor):	T3a
N (Lymph node metastasis):	NX
M (Distant metastasis):	MX
Storage:	Store frozen tissue sections at -80°C.
Stability:	All frozen tissue sections are stable for 1 year from date of purchase if stored at -80°C without repeated freeze/thaws.

Product images:

4x Image



20x Image