

Product datasheet for **CS502614**

Frozen Tissue Sections, Thymus

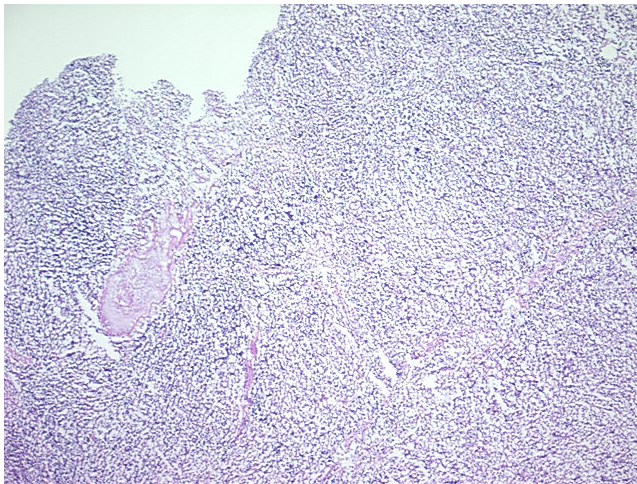
Product data:

Product Type:	Frozen Sections
Disease State:	Other Disease
Diagnosis Category:	Benign Tumors
Tissue:	Thymus
Frozen Sample ID:	FR00006786
Case ID:	CI0000000320
Tissue of Origin:	Thymus
Site of Finding:	Thymus
Appearance:	T
Sample Diagnosis (from Pathology Verification):	Thymoma
Normal:	0%
Lesional:	0%
Tumor:	10%
Tumor Hypo/Acellular Stroma:	0%
Tumor Hypercellular Stroma:	0%
Necrosis:	90%
Pathology Verification notes from H&E review:	Lymphocytic component predominant
CASE Diagnosis (from medical center path report):	Thymoma
Age:	50
Gender:	Male
Race:	White or Caucasian

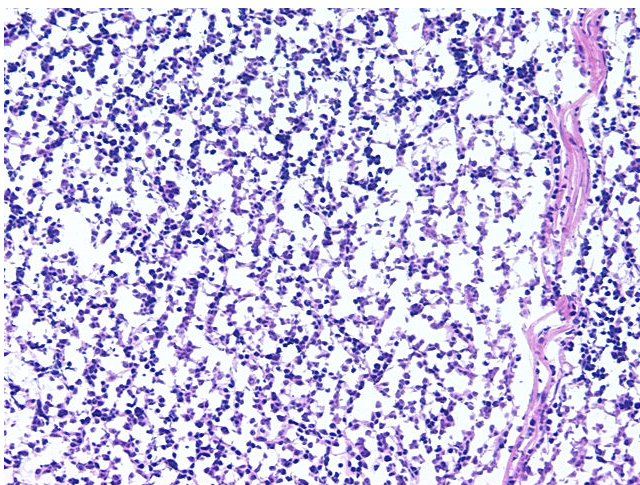


[View online »](#)

Tumor Grade:	Not Reported
Minimum Stage Grouping:	Not Reported
T (Extent of Primary Tumor):	Not Reported
N (Lymph node metastasis):	Not Reported
M (Distant metastasis):	Not Reported
Diagnostic Test Results:	CD3 ~ Leu4 ~ UCHT1 ! by IHC,Positive; Cytokeratin (Pan) ~ Keratin, Pan ! by IHC,Positive; Ki67 ~ MIB1 ! by IHC,Positive; Terminal deoxynucleotidyl transferase ~ TdT ! by IHC,Positive; CD1a ~ Leu6 ! by IHC,Positive, focal; CD5 ~ Leu1 ! by IHC
Storage:	Store frozen tissue sections at -80°C.
Stability:	All frozen tissue sections are stable for 1 year from date of purchase if stored at -80°C without repeated freeze/thaws.

Product images:

4x Image



20x Image