

## Product datasheet for **CS502573**

### Frozen Tissue Sections, Myometrium

#### Product data:

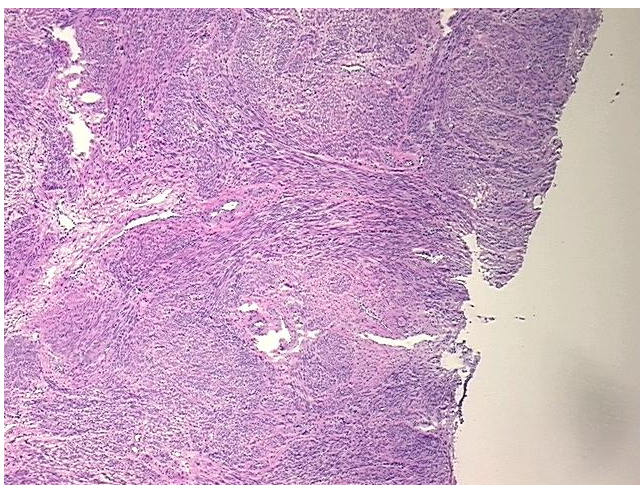
Product Type:	Frozen Sections
Disease State:	Normal
Diagnosis Category:	Normal
Tissue:	Myometrium
Frozen Sample ID:	FR0000669F
Case ID:	CI0000000316
Tissue of Origin:	Myometrium
Site of Finding:	Myometrium
Appearance:	R
Sample Diagnosis (from Pathology Verification):	Within normal limits
Normal:	100%
Lesional:	0%
Tumor:	0%
Tumor Hypo/Acellular Stroma:	0%
Tumor Hypercellular Stroma:	0%
Necrosis:	0%
CASE Diagnosis (from medical center path report):	Adenocarcinoma of endometrium, endometrioid
Age:	24
Gender:	Female
Race:	Black or African American
Tumor Grade:	FIGO G2: Moderately differentiated



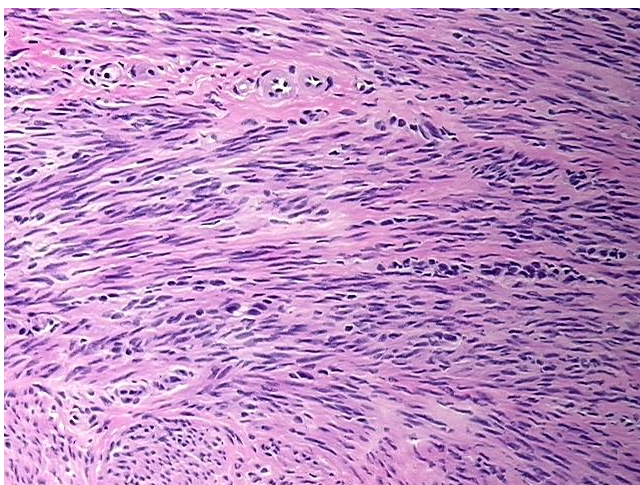
[View online »](#)

Minimum Stage Grouping:	IA
T (Extent of Primary Tumor):	T1a
N (Lymph node metastasis):	NX
M (Distant metastasis):	MX
Storage:	Store frozen tissue sections at -80°C.
Stability:	All frozen tissue sections are stable for 1 year from date of purchase if stored at -80°C without repeated freeze/thaws.

### Product images:



4x Image



20x Image